



Viking Village, Barnegat Light, New Jersey

Fisheries Communications Plan for the Attentive Energy Offshore Wind Project

Attentive Energy LLC

12 East 49th Street, 11th Floor
New York, NY 10017

Lease Area OCS-A 0538

August 23, 2022



Project Document N°:	ATT-FSH-COM-PLN-ATT-000001	
Release Date:	23-Aug-22	
Revision	3	
Document Status	IFU – Issued for Use	
Checked by:	Brian LeFebvre	Date: 8/19/2022
Approved By:	Christen Wittman	Date: 8/23/2022

Revision Tracking

Version	Date Edited	Edited By	Checked By
3	8/23/2022	SVE	BLE
2	12/2020	BCA	CWI
1	10/2020	BCA	CWI

TABLE OF CONTENTS

ACRONYMS AND ABBREVIATIONS	5
SECTION 1 – INTRODUCTION.....	7
Plan Overview	7
Points of Contact.....	7
About Attentive Energy.....	8
Commitment to Safety	8
Project Description	9
Fisheries Resources.....	10
Fishing Communities	12
SECTION 2 – PLAN DEVELOPMENT	13
Goals and Objectives	13
Commitment to Fisheries	13
Guidelines and Requirements	15
Lease Stipulations.....	16
Progress Reports	17
History of the Plan.....	17
Revisions to the Plan	18
SECTION 3 - ROLES AND RESPONSIBILITIES.....	18
Fisheries Liaison	19
Fisheries Representatives.....	20
Onboard Fisheries Liaisons	21
SECTION 4 – ENGAGEMENT APPROACHES.....	22
Approaches for Achieving Engagement Objectives.....	22
Key Performance Indicators.....	23

SECTION 5 – ENGAGEMENT ACTIVITIES 24

SECTION 6 – CONCLUSION 26

ATTACHMENT A. FISHERIES ENGAGEMENT ACTIVITIES AND KEY PERFORMANCE
INDICATORS TRACKING TABLE FOR THE ATTENTIVE ENERGY OFFSHORE WIND
PROJECT27

ACRONYMS AND ABBREVIATIONS

Acronym/abbreviation	Definition
ACP	American Clean Power
Attentive Energy	Attentive Energy LLC
BOEM	Bureau of Ocean Energy Management
COD	commercial operation date
COP	construction and operations plan
E-TWG	New York State Environmental Technical Working Group
F-TWG	New York State Fisheries Technical Working Group
fishing communities	commercial and recreational fishing communities
FL	fisheries liaison
FR	fisheries representative
GW	gigawatt
KPI	key performance indicator
Lease Area	Lease Area OCS-A 0538
NEAMAP	Northeast Areas Monitoring and Assessment Program
NEFSC	Northeast Fisheries Science Center
NMFS	National Marine Fisheries Service
NYB	New York Bight
NYSERDA	New York State Energy Research and Development Authority
OCS	Outer Continental Shelf
OFL	onboard fisheries liaison
Project	Attentive Energy Offshore Wind Project
Plan	Fisheries Communications Plan
RODA	Responsible Offshore Development Alliance
ROSA	Responsible Offshore Science Alliance

Acronym/abbreviation	Definition
SHEQ	safety, health, environment, and quality
TotalEnergies	TotalEnergies Renewables USA LLC
VHF	very-high frequency
USCG	U.S. Coast Guard

SECTION 1 – INTRODUCTION

Plan Overview

Attentive Energy LLC (“Attentive Energy”), a subsidiary of TotalEnergies Renewables USA, LLC (“TotalEnergies”), is the leaseholder of Lease Area OCS-A 0538 (“Lease Area”), an 84,332-acre area approximately 54 miles from New York and 42 miles from New Jersey. Attentive Energy proposes to construct and operate a wind energy generation facility (“Project”) within the Lease Area.

Attentive Energy has developed this Fisheries Communications Plan (“Plan”) to outline its commitments and approaches to providing early, open, and transparent two-way communication with commercial and recreational fishing communities (“fishing communities”) and support effective collaboration throughout all stages of the Project. This Plan is addressed to those who identify as being part of the fishing communities and any associated stakeholders.

Attentive Energy is committed to collaborating with the fishing community as early as possible through open lines of communication to collect comprehensive information for the Project from its very beginning. Good collaboration will allow Attentive Energy to use the input and experience of the fishing community to inform Project planning, design and operations while avoiding, minimizing, and mitigating potential impacts to established fishing practices, fisheries, and the environment. As such, Attentive Energy has been actively engaging and collaborating with fishing communities since 2018 by attending and supporting joint port hours hosted by offshore wind developers; attending Mid-Atlantic Fisheries Management Council and New England Fisheries Management Council meetings; and spearheading survey and outreach campaigns. Attentive Energy has also been engaged in the American Clean Power Association’s (“ACP”) Fisheries Working Group and is a part of the ACP steering committee’s recreational fisheries outreach campaign. Since becoming a leaseholder for the Lease Area in May 2022, Attentive Energy has joined the New York State Energy Research and Development Authority (“NYSERDA”) New York State Fisheries Technical Working Group (“F-TWG”) and is in the process of joining the Responsible Offshore Science Alliance (“ROSA”) Advisory Council.

This Plan will continue to evolve and be updated as Attentive Energy progresses through different stages of the Project. If you would like to receive updated versions of this Plan when it becomes available or would like to sign up for updates, please send an email to Sebastian Velez, the Attentive Energy Fisheries Liaison (“FL”), at Sebastian.Velez@totalenergies.com.

To learn more about the Project, visit www.attentiveenergy.com. To learn more about Attentive Energy’s commitment to fisheries, visit www.attentiveenergy.com/fishermen.

Points of Contact

Attentive Energy has identified the individuals in Table 1-1 as points of contact for this Plan. These individuals play key roles in the development, implementation, and maintenance of this Plan, as described in Section 3.0, Roles and Responsibilities.

Table 1-1. Attentive Energy Key Points of Contact

Name	Role	Contact Information
Sebastian Velez	Fisheries Liaison, Primary Point of Contact	Address: 12 E 49th St, 11th Floor, New York, NY 10017 Telephone: +1 (731) 456-7715 Email: Sebastian.Velez@totalenergies.com
Brian LeFebvre	Marine Affairs Manager, Secondary Point of Contact	Address: 311 Summer Street, Suite 200 Boston, MA 02210 Telephone: +1 (202) 997-8074 Email: Brian.Lefebvre@totalenergies.com

About Attentive Energy

Attentive Energy is a wholly owned subsidiary of TotalEnergies, which is part of a global multi-energy company, TotalEnergies SE, that produces and markets energy. TotalEnergies SE has an 11gigawatt (“GW”) offshore wind development portfolio globally and made its debut into the U.S. offshore wind market via the Bureau of Ocean Energy Management’s (“BOEM”) New York Bight (“NYB”) 2022 lease auction, where rights were obtained for developing the Project in the Lease Area. TotalEnergies plans to expand its presence across the U.S. through further development of offshore wind projects.

Commitment to Safety

Safety is a core value at TotalEnergies, who, as an energy provider, strives to be recognized as an industry reference for safety performance across projects and operational activities. All activities undertaken by TotalEnergies are conducted in accordance with its Code of Conduct and the Safety, Health, Environment & Quality (“SHEQ”) Charter, the primary principle of which states, “TotalEnergies holds safety, security, health, respect for the environment, customer satisfaction, listening to all stakeholders by way of an open dialogue, as paramount priorities.”

TotalEnergies is uncompromising when it comes to safety and requires that each individual demonstrate the strictest discipline in preventing accidents and deliberate damage and in protecting health, the environment, and product and service quality while addressing stakeholder expectations.

Attentive Energy fully complies with all requirements of the TotalEnergies SHEQ charter and is committed to ensuring protection of the environment, health, and safety of all those involved in its activities. As such, this Plan is not only designed to inform and facilitate collaboration with the fishing community, but also to address any safety concerns associated with the Project and offshore wind development. Attentive Energy remains committed to identifying and mitigating risks as early as possible and welcomes input from the fishing community on safety-related matters.

Project Description

The Lease Area (Figure 1-1) is an 84,332-acre area approximately 54 miles (47 nautical miles) from its nearest shoreline point to New York and approximately 42 miles (36 nautical miles) from its nearest shoreline point to New Jersey. Attentive Energy proposes to construct and operate the Project within the Lease Area. The Project is expected to reach commercial operation date (“COD”) in the late 2020s.

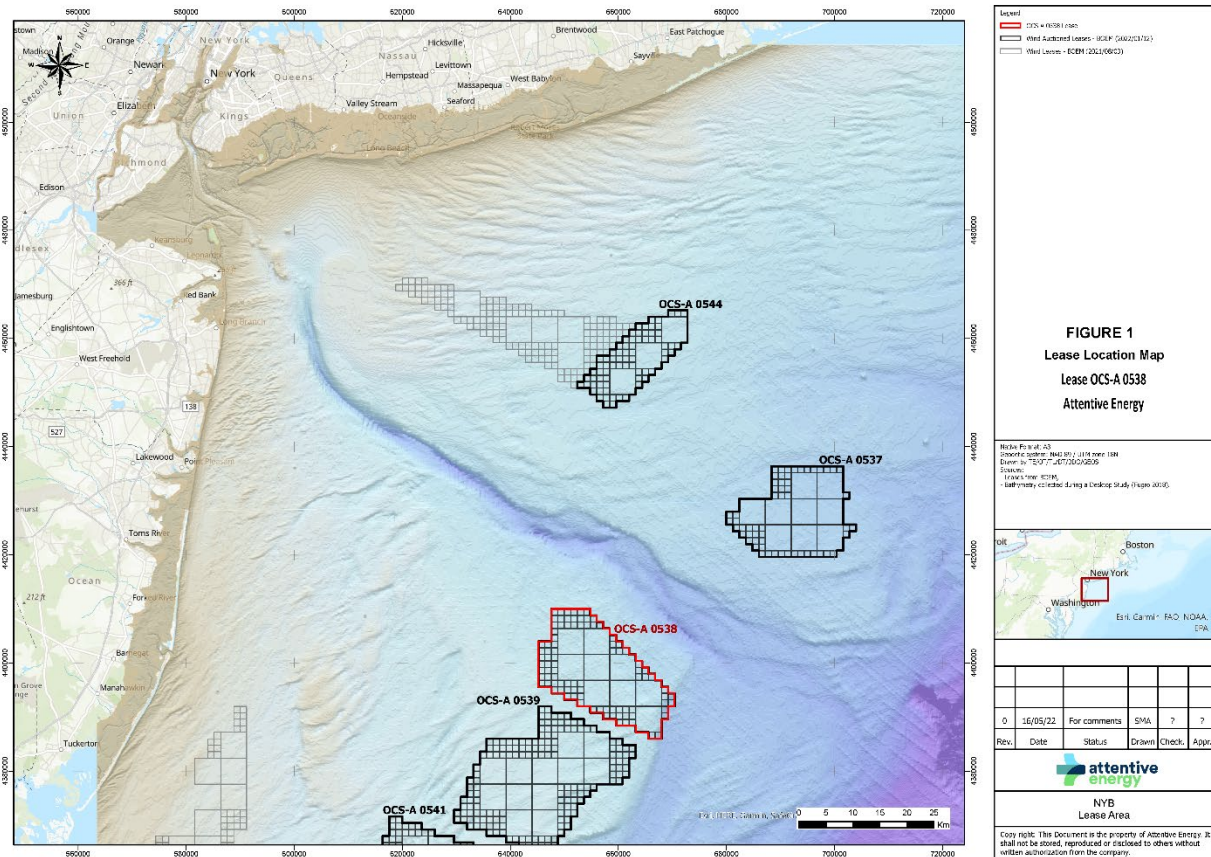


Figure 1-1. Lease Area OCS-A 0538, New York Bight Hudson South, Location Map

BOEM has designated 79,438 acres (approximately 94 percent) of the Lease Area as a developable area. There is a 2.8-mile-wide (2.4 nautical miles) no surface occupancy area along the southwestern edge of the Lease Area and the northeastern edge of an adjacent lease area (OCS-A 0539) (Figure 1-1). On the northeastern edge, the Lease Area runs adjacent to the U.S. Coast Guard’s (“USCG”) proposed safety fairway – the Hudson Canyon to Ambrose Southeastern Fairway. Attentive Energy may develop and construct offshore wind facilities within the Lease Area in phases, subject to future technical, transmission, and commercial constraints.

The Lease Area has an average water depth of 164 feet (50 meters), with water depths ranging from 125 feet (38 meters) to 207 feet (63 meters), suitable for conventional, bottom-fixed foundations.

Attentive Energy has not yet determined the locations of the electricity grid points of interconnection and associated landfall or offshore export cable routes; however, it is anticipated the Project will interconnect into New York, New Jersey, or both states. These and other design elements will be identified during development stages of the Project and will be informed by input from interested parties, including fishing communities, other ocean users, and regulatory agencies.

Fisheries Resources

The New York Bight region is host to a wide variety of species that have contributed to commercial and recreational fishing industries for many years. The water currents and ecology of the region are seasonally variable and are impacted by ocean topography, storms, and freshwater inputs from rivers, particularly the Hudson River. Sediments in the New York Bight region are primarily sand, with patches of coarse-grained gravel, fine-grained silt, rocky outcroppings, and mud deposits.

Table 1-2 summarizes fish and fisheries species present in New York Bight as observed through the Northeast Fisheries Science Center (“NEFSC”) and the Northeast Areas Monitoring and Assessment Program (“NEAMAP”) fisheries trawl data¹. These species have the potential to occur within the Lease Area.

¹ New York State Energy Research & Development Authority (NYSERDA). 2017. Offshore Wind Master Plan 1.0, Fish and Fisheries Study. Available at: <https://www.nyserda.ny.gov/-/media/Project/Nyserda/Files/Publications/Research/Biomass-Solar-Wind/Master-Plan/17-25j-Fish-and-Fisheries-Study.pdf>. Accessed July 13, 2022.

Table 1-2. Species within the New York Bight Region with Potential to Occur in the Lease Area

Common Name	Scientific Name
American lobster	<i>Homarus americanus</i>
American shad	<i>Alosa sapidissima</i>
Atlantic butterfish	<i>Peprilus triacanthus</i>
Atlantic mackerel	<i>Scomber scombrus</i>
Atlantic herring	<i>Clupea harengus</i>
Atlantic sea scallop	<i>Placopecten magellanicus</i>
Atlantic sturgeon (E/T)	<i>Acipenser oxyrinchus oxyrinchus</i>
Atlantic torpedo ray	<i>Torpedo nobiliana</i>
Barndoor skate	<i>Dipturus laevis</i>
Bay anchovy	<i>Anchoa mitchilli</i>
Black sea bass	<i>Centropristis striata</i>
Blackbelly rosefish	<i>Helicolenus dactylopterus</i>
Bluefish	<i>Pomatomus saltatrix</i>
Blue shark	<i>Prionace glauca</i>
Clearnose skate	<i>Raja eglanteria</i>
Common thresher shark	<i>Alopias vulpinus</i>
Cusk (C)	<i>Brosme brosme</i>
Fourspot flounder	<i>Hippoglossina oblonga</i>
Giant Manta (P)	<i>Manta birostris</i>
Gulf Stream flounder	<i>Citharichthys arctifrons</i>
Haddock	<i>Melanogrammus aeglefinus</i>
Horseshoe crab	<i>Limulus polyphemus</i>
Jonah crab	<i>Cancer borealis</i>
Long-finned squid	<i>Doryteuthis pealeii</i>
Monkfish (goosefish)	<i>Lophius americanus</i>
Northern kingfish	<i>Menticirrhus saxatilis</i>
Northern puffer	<i>Sphoeroides maculatus</i>
Northern sand lance	<i>Ammodytes dubius</i>
Northern sea robin	<i>Prionotus carolinus</i>
Northern short-finned squid	<i>Illex illecebrosus</i>
Oceanic White-Tip Shark (P)	<i>Carcharhinus logimanus</i>
Ocean pout	<i>Macrozoarces americanus</i>
Ocean quahog	<i>Artica islandica</i>
Red hake	<i>Urophycis chuss</i>
Red-eye round herring	<i>Etrumeus sadina</i>
Rosette skate	<i>Leucoraja garmani</i>
Roughtail stingray	<i>Bathytoshia centroura</i>
Sand tiger shark	<i>Carcharias taurus</i>
Scup (porgy)	<i>Stenotomus chrysops</i>
Sea raven	<i>Hemirhamphus americanus</i>
Shortfin mako shark	<i>Isurus oxyrinchus</i>
Silver hake (whiting)	<i>Merluccius bilinearis</i>
Smooth dogfish	<i>Mustelus canis</i>
Spiny dogfish	<i>Squalus acanthias</i>
Spot	<i>Leiostomus xanthurus</i>
Spotted Hake	<i>Urophycis regia</i>
Weakfish	<i>Cynoscion regalis</i>
Striped bass	<i>Morone saxatilis</i>
Striped sea robin	<i>Prionotus evolans</i>

Summer flounder (fluke)	<i>Paralichthys dentatus</i>
Surfclam	<i>Spisula solidissima</i>
Tautog (blackfish)	<i>Tautoga onitis</i>
Tilefish	<i>Lopholatilus chamaeleonticeps</i>
White hake	<i>Urophycis tenuis</i>
Windowpane flounder	<i>Scophthalmus aquosus</i>
Winter flounder	<i>Pseudopleuronectes americanus</i>
Winter skate	<i>Leucoraja ocellata</i>
Witch flounder	<i>Glyptocephalus cynoglossus</i>
Yellowtail flounder	<i>Limanda ferruginea</i>

These species were selected based on recorded individual presence obtained from trawl data from the NEFSC and the NEAMAP, as reported by NYSERDA (2017).

Source: New York State Energy Research & Development Authority (NYSERDA). 2017. Offshore Wind Master Plan, Fish and Fisheries Study. Available at: <https://www.nyserda.ny.gov/-/media/Project/Nyserda/Files/Publications/Research/Biomass-Solar-Wind/Master-Plan/17-25j-Fish-and-Fisheries-Study.pdf>. Accessed July 13, 2022.

Key:

E = endangered

T = threatened

P = proposed for listing

C = candidate for listing

NEFSC = Northeast Fisheries Science Center

NEAMAP = Northeast Areas Monitoring and Assessment Program

NYSERDA = New York State Energy Research and Development Authority

Fishing Communities

Attentive Energy’s ongoing engagement with fisheries and marine stakeholders has resulted in valuable feedback to help inform Project design. To continue supporting fisheries engagement, Attentive Energy has begun to identify and coordinate with individual fishermen and Fisheries Representatives (“FR”) that take part in fishing activities within the Lease Area. Attentive Energy has actively attended joint port hours hosted by offshore wind developers and meetings with the Mid-Atlantic Fisheries Management Council and the New England Fisheries Management Council. Attentive Energy has also spearheaded survey and outreach campaigns to help identify those fishing communities that use or have resource-related interests in or near the Lease Area. Through these efforts, Attentive Energy has identified ports from Massachusetts to Virginia that are used to access the Lease Area for commercial and recreational fishing; fishing parties at these ports are therefore the target audience for this Plan.

SECTION 2 – PLAN DEVELOPMENT

Goals and Objectives

The principal goal of this Plan is to promote meaningful and informative dialogue between Attentive Energy and the fishing communities to build trust, reduce potential conflicts, and align the Project with the relevant BOEM lease stipulations. Attentive Energy has used a variety of resources (see Section 1.1) to create this Plan as a basis to guide outreach, collaboration, and communication activities with the fishing community. This Plan encourages transparency during all phases of Project development to ensure the fishing community is fully engaged early during Project development and remains fully engaged throughout the life of the Project.

The key objectives of this Plan are as follows.

- **Safety:** Identify safety concerns and improve safety for commercial and recreational fishermen who transit through or fish within the Lease Area and along cable routes to shore.
- **Awareness:** Enhance awareness of the Project and the BOEM offshore wind permitting process to emphasize the opportunities for engagement the recreational and commercial fishing industries will have throughout Project planning, permitting, and development.
- **Collaboration:** Incorporate fishing communities' experience into Attentive Energy's decision-making throughout Project planning, design, and development.
- **Science Based:** Use the best available science and data to identify any conflicts with the fishing community and impacts to fisheries resources and ensure those conflicts and impacts have been wholly considered and alleviated wherever feasible.
- **Open and Accountable:** Make available to the commercial and recreational fishing industries consistent and dependable communication channels throughout all phases of the Project.
- **Proactive:** Develop and present a communication strategy that minimizes conflicts and sets a process for resolving conflicts between the fishing communities and the Project.

Commitment to Fisheries

Attentive Energy values direct local engagement, and its community-minded approach is a core value of the Project. By working collaboratively with marine stakeholders and the fishing community, in-water activities can be optimized to prioritize safety and minimize impacts on fisheries resources. Attentive Energy plans to continue to build and expand upon engagement efforts that predate being awarded the lease in 2022.

Attentive Energy is committed to the following principles to maximize collaboration and to minimize impacts between fishing communities and the Project.

- Stakeholder input is welcome at any point during Project development. There are certain times where input is considered especially beneficial to overall Project development. This Plan will reference the overall Project timeline and milestones and identify opportunities for providing input prior to submission of a construction and operations plan (“COP”) to BOEM.
- Attentive Energy will consult with the fishing community at the earliest practical juncture to inform Project design features such as turbine spacing, orientation, and cable routes. To achieve these goals, Attentive Energy will continue to engage in port visits, public meetings, and one-on-one meetings.
- To the extent achievable, Attentive Energy will aim to orient Project turbine rows and space turbines in a way that allows safe navigation, minimizes impacts to fishing in the Lease Area, and balances multiple stakeholder priorities. Attentive Energy recognizes that certain Project design aspects, including the spacing and orientation of turbines, may also be influenced by regulatory agency considerations.
- Attentive Energy will take measures to ensure Project vessels have the protocols in place to avoid fishing gear to the extent possible. To achieve this goal, Attentive Energy plans to use onboard fisheries liaisons (“OFL”) who have established experience in the commercial fishing industry and with the gear types used in the NYB. By capitalizing on this type of experience, Attentive Energy hopes to reduce gear interactions with the commercial fishing industry while also supporting fishermen through OFL employment opportunities.
- Recognizing the possibility of Project-related impacts to the fishing industry in the form of lost or damaged gear, Attentive Energy will develop a publicly available “Gear Loss Claims” process whereby fishermen can submit claims to Attentive Energy. One of Attentive Energy’s goals in establishing this process will be to streamline the submission process for claims. Additionally, Attentive Energy will incorporate the insights of the commercial fishing industry into the Gear Loss Claims process by utilizing the experience of its FRs.
- Attentive Energy supports a regional or national compensation fund to compensate for any loss (i.e., lost gear, damaged gear, financial loss, etc) that would occur after implementation of avoidance, minimization, and mitigation measures that will be developed for the Project. Attentive Energy will continue to actively participate in the on-going work among offshore wind developers, BOEM, other federal agencies, Northeast and Mid-Atlantic states, ACP, F-TWG, the Responsible Offshore Development Alliance (“RODA”), fishing communities, and other stakeholders to develop a centralized, over-arching compensatory mitigation program that addresses foreseeable impacts to fishing and fisheries from offshore wind development.
- Attentive Energy will strive to minimize impacts to fisheries resources from cables and cable protection methods. Potential impacts will be a main point of consideration when

identifying locations and installation methods of cables and cable protections, while also recognizing appropriate seabed conditions and technical requirements.

- Attentive Energy's FL will represent Attentive Energy and will be responsible for communication between Attentive Energy and the fishing community. The FL serves as a knowledgeable point of contact with whom the fishing community can efficiently and effectively communicate (generally, through FRs, once they are selected).
- Attentive Energy will identify FRs with knowledge of fishing practices and resources prevalent in the Lease Area. FRs will include established and trusted members of the fishing community who can represent those that frequently fish in or transit through the Lease Area.
- Attentive Energy will maintain a webpage aimed at sharing relevant information with the fishing community (www.attentiveenergy.com/fishermen). This Plan, in addition to semi-annual progress reports, Project-specific information, Notices to Mariners, resource information, and studies as they become available, will be made available on the webpage. The webpage will also include details for on-water activities including a description of activities, dates of the activities, vessel names, and contact information.
- Attentive Energy will work collaboratively with the fishing, scientific and academic communities, as well as state and federal agencies, to advance regional research and monitoring of fisheries and offshore wind interactions in federal waters. The goals of these efforts are to develop robust data on fisheries and increase the understanding of the impacts from wind energy development on fisheries and the ocean ecosystems on which they depend.
- Attentive Energy will follow all recommendations of the USCG with respect to ensuring human safety. Attentive Energy will also implement all aspects of TotalEnergies SHEQ program (see Section 1.2.1).
- Attentive Energy will follow all recommendations of the BOEM with respect to communicating with fishermen and coordinating Project-related and fishing vessel interactions.

Guidelines and Requirements

This Plan was developed using lease stipulations for the Lease Area in addition to BOEM guidelines for fisheries best management practices and mitigation measures², fisheries social and economic conditions³, and draft fisheries mitigation⁴; recommendations from the Mid-

² BOEM. 2014. Development of Mitigation Measures to Address Potential Use Conflicts between Commercial Wind Energy Lessees/Grantees and Commercial Fishermen on the Atlantic Outer Continental Shelf. Final Report on Best Management Practices and Mitigation Measures. Available at: <https://www.boem.gov/sites/default/files/renewable-energy-program/Fishing-BMP-Final-Report-July-2014.pdf>.

³ BOEM. 2020. Guidelines for Providing Information on Fisheries Social and Economic Conditions for Renewable Energy Development on the Atlantic Outer Continental Shelf Pursuant to 30 CFR Part 585. Available at: <https://www.boem.gov/sites/default/files/documents/about-boem/Social%20%26amp%3B%20Econ%20Fishing%20Guidelines.pdf>.

⁴ BOEM. 2022. Guidelines for Mitigating Impacts to Commercial and Recreational Fisheries on the Outer Continental Shelf Pursuant to 30 CFR Part 585. Available at: <https://www.regulations.gov/document/BOEM-2022-0033-0003>.

Atlantic Fishery Management Council and New England Fishery Management Council⁵; and communications with the commercial and recreational fishing industries. This Plan also incorporates knowledge from Attentive Energy's FL's and Marine Affairs Manager's years of experience working with the fishing community.

Lease Stipulations

This Plan incorporates stipulations required by BOEM in Attentive Energy's commercial lease terms for the Lease Area. Lease stipulations require Attentive Energy to do the following.

- Develop and make publicly available a draft Plan within 120 days of lease execution that describes strategies Attentive Energy intends to use for communicating with commercial and recreational fisheries known to operate in or near the Lease Area.
- Make the draft Plan publicly available within 120 days of lease execution.
- Invite input from those members of the fishing communities to participate in the development of a Plan.
- Update the Plan from time to time in response to feedback obtained through engagement.
- Describe in the Plan:
 - strategies Attentive Energy intends to use for communicating with fishing communities;
 - mechanisms to distribute notices through a local "Notice to Mariners" and other outreach (e.g., fisheries management councils, newsletters, websites, Fisheries Liaison Offices and/or Fisheries Representatives, state agencies);
 - contact information for Attentive Energy's primary point of contact with commercial and recreational fisheries (i.e., the FL);
 - the strategy and general timing of discussions with fishing communities aimed at reducing conflicts between fishing communities and the Project (avoidance, minimization, and mitigation measures); and
 - plans for coordinating with fishing communities to identify peak fishing season and, to the extent practicable, avoid interactions between survey vessels and commercial fishermen in offshore areas.
- Notify ocean users two weeks prior to any geological and geophysical survey activities.
- Provide annual summaries to BOEM of any filed complaints or claims and outcomes to support their understanding of the frequency and extent of gear interactions.

⁵ Moura, S., A. Lipsky, and M. Morse. 2015. Options for Cooperation between Commercial Fishing and Offshore Wind Energy Industries. Available at: <https://osf.io/sfu9e/download>.

Progress Reports

Attentive Energy is required by lease stipulations to also submit a progress report every six months (or as BOEM otherwise directs) detailing engagement activities with stakeholders, including the fishing community, during the site assessment term (i.e., until COP approval). The intent of this requirement is to improve Attentive Energy's communication and transparency with fishing communities and members of the general public that may be potentially affected by Project development activities. Specifically, the progress report must:

- summarize overall progress since the last progress report, or, in the case of the first report, since the Lease effective date;
- identify parties applicable to the Project;
- summarize, and update for subsequent reports, engagement with parties since the previous reporting period;
- document potential adverse effects from the Project to the interests of parties;
- document how, if at all, Project development (including design, implementation, and community investments) has been informed by or altered to address potential adverse effects;
- describe any anticipated or scheduled engagement activities for the next reporting period;
- summarize feedback from engagement with parties on transmission planning (prior to proposing any export cable route); and
- provide information that can be made available to the public and posted on the BOEM website.

If BOEM provides comments on the progress report (within 60 calendar days from receipt), Attentive Energy will address comments and modify the progress report.

History of the Plan

Since 2018, well in advance of acquiring development rights for the Lease Area, Attentive Energy has been actively engaged with the NYB fishing community. In 2019, Attentive Energy hired its first full-time FL in recognition of its goal to establish an enduring relationship with fishing communities that use or have resource-related interests in or near the Lease Area.

In 2020, Attentive Energy's Fisheries Team published the first version of this Plan (version 0) to guide initial communication and engagement with fishing communities. Attentive Energy launched its first direct mail and online fishing community survey in October 2020 to over 3,000 commercial and recreational fishermen and mariners. Based on feedback from the fishing community and mariners received during this initial outreach, an updated Plan (version 1) was released in December 2020. These first two versions of the Plan were developed prior to Attentive Energy acquiring development rights for the Lease Area and therefore represented

Attentive Energy's broader goals for communicating with fishing communities throughout the Mid-Atlantic and New England regions.

Leading up to and following BOEM's 2022 lease auction, Attentive Energy expanded its engagement with fishing communities in the NYB to align with BOEM requirements and respond to feedback received from fishermen since 2018. Attentive Energy has actively attended joint port hours hosted by offshore wind developers in Point Judith, Rhode Island, New Bedford, Massachusetts, and Montauk, New York, and has been an active attendee at Mid-Atlantic Fisheries Management Council and New England Fisheries Management Council meetings. In October 2020, Attentive Energy spearheaded a survey and completed additional outreach to help identify those fishing communities that use or have resource-related interests in and around the Lease Area. Additionally, Attentive Energy has been actively participating in the ACP Fisheries Working Group and steering committee for recreational fisheries outreach. After becoming the leaseholder for the Lease Area, Attentive Energy joined the F-TWG. Attentive Energy is also in the process of joining the ROSA Advisory Council.

As a result of its active participation in fisheries-related engagements, Attentive Energy has been able to identify key fishing ports from Massachusetts to Virginia that are used to access the Lease Area and has modified the Plan (version 3) to target those communities. Attentive Energy has also revised its online fishing community survey, which can be accessed at www.attentiveenergy.com/fishermen. The updated survey expands upon information gathered by the original survey and is tailored to fishing activity and other marine uses in and around the Lease Area.

Revisions to the Plan

This Plan will be managed as a "living document" that will be modified and adapted over the life of the Project. In addition to lease requirements, Attentive Energy will undertake annual reviews to ensure the Plan is effectively accomplishing its stated goals and objectives.

Attentive Energy welcomes stakeholder feedback and invites any stakeholder to suggest modifications or amendments to the Plan. In the absence of unsolicited stakeholder feedback, Attentive Energy will proactively engage with fishing communities to assess this Plan's effectiveness and identify any pertinent modifications. These changes will be noted in subsequent updates and summarized in semi-annual progress reports to BOEM.

SECTION 3 - ROLES AND RESPONSIBILITIES

A crucial component to ensure outreach success is Attentive Energy's commitment to build a fisheries outreach team, a process which has already begun with Attentive Energy's selection of a FL. To the greatest extent possible, the FL and FRs will proactively engage with fishing communities identified in this Plan, with the goal of providing the fishing community early and frequent opportunities for meaningful input throughout all phases of Project planning and development.

The FL and FRs will remain in close contact with the commercial and recreational fishing industries and each other to keep information-sharing open and up to date throughout the Project's progress. Specific roles for the FL and FRs are described in the following sections.

Fisheries Liaison

Attentive Energy's FL, [Sebastian Velez](#) is the principal outreach representative for Attentive Energy. He will be the primary point of contact for this Plan (see Table 1-1 for contact information) and will be responsible for its implementation.

Sebastian has deep experience in fisheries science and management, having previously worked as a fisheries observer in the Bering Sea and as the International Program Analyst for the National Oceanic and Atmospheric Administration's Office of Law Enforcement, where he focused on combating illegal, unreported, and unregulated fishing activities in Southeast Asia and South America. Sebastian holds a master's degree in biology from Florida Atlantic University, where he researched the effects of the Deepwater Horizon Oil Spill on juvenile snappers and groupers in the Gulf of Mexico. He received his bachelor's degree from the University of Maine with a major in Marine Science. Sebastian brings extensive understanding of the management processes and ecological concerns of fisheries as well as extensive communications experience with the fishing community to Attentive Energy's FL role.

FL responsibilities include the following.

1. Update and refine the Plan in coordination with Attentive Energy's Project management and technical teams and with input from the fishing community, BOEM, National Marine Fisheries Service ("NMFS") and other federal agencies, state agencies, the Mid-Atlantic Fisheries Management Council, and the New England Fisheries Management Council.
2. Create, expand, and sustain a single source for fishing community contacts, community-wide FL and FR contacts, fisheries management state agencies, councils, commissions, harbor masters, and industry associations.
3. Engage and collaborate with the fishing community on Attentive Energy's ongoing activities and the efficacy of the Plan and make improvements wherever possible.
4. Identify strategies to avoid, minimize, and mitigate resource conflicts from the Project through early and frequent communications to the fishing community. These strategies may include the following.
 - a. Organize and distribute timely updates on Project-related vessel traffic through FRs, Attentive Energy's website, social media outlets, text message alerts, Notice to Mariners, and very-high frequency ("VHF")-marine radio channels.
 - b. Provide in updates vessel identification for Project-related vessels, details of the on-water work being conducted, and clearance warnings as needed based on the requirements of the activities being conducted.
 - c. Advise fishermen on the removal of static gear when survey or construction activities could present a risk of damage.

5. Work with FRs and the fishing community on the planning and timing of Project-related surveys and construction and operations activities to design a plan for reducing the potential for damage to fishing gear to the maximum extent possible. This coordination will include discussions to identify peak fishing seasons and, to the extent practicable, methods for avoiding offshore interactions between survey vessels and commercial fishermen.
6. Assemble and facilitate meetings with the fishing community to understand the potential impacts of the Project on their industry.
7. Communicate to Attentive Energy's Project management and technical teams the concerns of the fishing community in a well-timed manner to allow for a swift response.
8. Work with FRs to facilitate an exchange of information to and from the fishermen or fishing community they represent.
9. Develop relationships in all ports within the scope of the Project to ensure two-way communication is established.
10. Promptly respond to the commercial and recreational fishing industries' concerns.

Fisheries Representatives

Attentive Energy will identify qualified FRs with personal experience with the fishing communities that use the Lease Area. At this time, Attentive Energy's communications with the fishing community will be led by the FL; however, FRs will help support the exchange of information.

FRs represent commercial and recreational fishing industries by bringing information and ideas to the FL. FRs do not work directly for Attentive Energy; rather, they represent their respective fishing communities to collect information about Project and resource concerns from their communities and report this information to the FL. When appropriate, FRs will help distribute Project information from the FL to their fishing communities.

It is Attentive Energy's goal to develop a network of FRs to maximize coverage of the fishing community from both a geographical and gear type perspective. Attentive Energy is committed to working with as many FRs as needed to have satisfactory representation throughout the Project's scope.

FR responsibilities include the following.

1. Provide the FL all feedback and information from the fishing community that may inform or improve this Plan.
2. Be well-versed on commercial and recreational fishing gear types, targeted species, sectors, patterns, and seasonal shifts relevant to the Project.
3. Document and maintain, in consultation with the FL, points of contact and contact information for the fishing community, FLs and FRs, and fisheries management state agencies, councils, commissions, harbor masters, and industry associations.

4. Maintain a log of all contacts made with fishing vessels in and around the Lease Area, along with the type of fishing being conducted, the gear type being used, species being targeted, vessels being used, and other pertinent details.
5. Inform and maintain a calendar of upcoming commercial and recreational fisheries events and meetings applicable to Attentive Energy.
6. Assist the FL in distributing updated Project information to the fishing community in their region and help facilitate communication between the FL and the fishing community.
7. Stay current on all recreational and commercial fishing activities and concerns in their region and report any conflicts promptly to the FL.
8. Enhance and promote an understanding of safe fishing practices within the Lease Area via communication to the broader recreational and commercial fishing communities within the NYB.
9. Remain impartial on any claims of liability or admission of responsibility for the commercial and recreational fishing gear claims submitted to Attentive Energy.
10. Report to the FL, via weekly FR reports, all concerns that have been brought to their attention by the fishing communities while preserving confidentiality of those who have expressed concern and supporting the integrity of the Project.

Onboard Fisheries Liaisons

Attentive Energy will identify OFLs who are personally familiar with the marine operations and fishing behaviors of the NYB. OFLs will be used, as practicable, during Project-related vessel operations, such as during offshore surveys and construction activities. The OFL will be contracted for the duration of vessel operation and will report to the FL.

OFL responsibilities include the following.

1. Aid survey and construction vessel captains with communication to fishing vessels within and near the Lease Area and document any existing fishing gear.
2. Ensure efficient and effective communication on-site and in real time during on-the-water offshore wind activities taking place within the Lease Area.
3. Record any observed fishing activities taking place within the Lease Area and confirm Project vessels are operated in accordance with this Plan.
4. Actively seek to avoid negative interactions with fishing gear and use VHF-marine radio to communicate with fishermen when potential gear interactions are identified.
5. In the event of a negative gear interaction, coordinate with the FL to resolve the situation safely and in a manner that is efficient and fair to all involved parties.

SECTION 4 – ENGAGEMENT APPROACHES

Attentive Energy, in coordination with the FL and members of the fishing community, has identified a variety of engagement approaches that will be used to facilitate communication between the fishing community and the Project team and achieve the engagement objectives outlined in this Plan.

As Attentive Energy gains further insight into the fishing activities taking place within the Lease Area, it will refine its engagement approaches and further focus on outreach to specific fishing communities that would be directly affected by Project activities.

Approaches for Achieving Engagement Objectives

Attentive Energy agrees that effective dialogue and consultation is the key to maximizing understanding while minimizing conflicts. Attentive Energy strives to connect with any affected or interested fishermen, and to ensure that these fishermen will continue to be involved and updated as the Project progresses. To achieve the engagement objectives outlined in Section 2.1, Goals and Objectives, Attentive Energy will implement the following approaches.

- **Target audience:** The target audience for the Project and this Plan includes those fishermen who participate in fisheries that use the following methods: trawl, mid-water trawl, sink gillnets, scallop dredges, trap/pot, bottom longline, hydraulic clam dredges, purse seine, and hook and line gear. The target audience also includes fishermen who are targeting Atlantic Sea Scallops, Black Seabass, Surfclams, Golden Tilefish, Monkfish, American Lobster, Atlantic Mackerel, Longfin and Northern Short-finned Squids, and highly migratory species within the NYB. To track such a vast industry, Attentive Energy will establish a comprehensive list of contacts among commercial and recreational fishermen, local and regional fisheries associations, councils, commissions, harbor masters, and other industry organizations.
- **Principle engagement channels:** To support engagement, the Attentive Energy FL will coordinate through established FRs to ensure that outreach and engagement activities are targeted to the correct audiences. Additionally, the FL will use a variety of methods to ensure successful and effective outreach: email, flyers, thumb drives, port agents, fishermen, newspapers, internet, and the Attentive Energy website (www.attentiveenergy.com/fishermen).
- **Engagement support tools and strategies:** Attentive Energy will use a variety of tools and implement appropriate strategies to support engagement with fishing communities. These tools and strategies will include the following:
 - Provide access to electronic Project and engagement information via the Attentive Energy website (www.attentiveenergy.com/fishermen), email lists, and social media.
 - Publish Project information in industry-specific publications (e.g., trade magazines).

- Provide a 24-hour phone service for up-to-date Project information and for reporting emergencies.
- Broadcast Project alerts to fishermen at sea through VHF-marine radio.
- Make available the FL contact information in this Plan, on the Attentive Energy website, and through other communication channels, as summarized above.

All in-person events are subject to safety and proper authorization from local authorities. Should in-person events not be possible, Attentive Energy will host virtual events.

Key Performance Indicators

Key performance indicators (“KPI”) are a set of quantifiable measurements or metrics used to gauge a company or organization’s overall, long-term performance in implementing a plan or program. In the context of this Plan, KPIs will be used to track Attentive Energy’s performance in conducting fisheries engagement activities for the Project. For each phase of the Project, Attentive Energy will track the following KPIs.

- The FRs or fishing communities participating in Plan activities.
- The number of engagement activities/actions completed compared to the number described in the Plan.
- Significant outcomes of engagement activities, including people reached, feedback received, issues or concerns identified, and decisions made.

KPIs will be tracked alongside engagement activities using Table A-1 in Attachment A. Attentive Energy will share a copy of this table with the biannual Progress Reports (see Section 2.2.2) with BOEM and make it publicly available on the Project website (www.attentiveenergy.com/fishermen). Attentive Energy will also solicit feedback and recommendations from the fishing communities on how to improve the Plan and its implementation.

SECTION 5 – ENGAGEMENT ACTIVITIES

Attentive Energy has actively engaged the fishing and mariner communities through regular port visits, widespread surveys, and multi-platform communications to introduce the Project, identify early concerns, answer questions to the extent possible, and build sustainable relationships.

Attentive Energy will engage with FRs and fishing communities through a variety of engagement activities. Table 5-1 summarizes the types of engagement activities Attentive Energy will use to communicate, collaborate, and coordinate with fishing communities.

Table 5-1. Types of Engagement Activities for the Project

Engagement Activity	Description
Virtual Meetings	<p>Attentive Energy will host virtual meetings with fishing communities and marine stakeholders. The meetings may include, but not be limited to, the following components.</p> <ul style="list-style-type: none"> • An opening statement by the fishing community and Attentive Energy • A review of progress made (i.e., Progress Reports) since previous meeting and updates on any related Attentive Energy action(s) • Knowledge/information sharing and listening/feedback sessions between fishermen and Attentive Energy • A question-and-answer session <p>Meeting format will be determined in consultation with the fishing community and other attendees.</p>
In-Person Meetings	<p>Attentive Energy will host in-person meetings with fishing communities and marine stakeholders. The meeting formats will vary, depending on need, and may include, but not be limited to, the following.</p> <ul style="list-style-type: none"> • Representatives from Attentive Energy will actively participate in joint port hours hosted by offshore wind developers to engage with fishing communities, answer questions, and address concerns, as needed. • Attentive Energy will continue to participate in Mid-Atlantic Fisheries Management Council and New England Fisheries Management Council meetings to familiarize the Project team with the larger fishing community and fishing-related activities. • Attentive Energy will hold in-person meetings with fisheries stakeholders, identified with the help of its FRs, to discuss fishing activity and other marine uses within and adjacent to the Lease Area.
Electronic Newsletter	<p>Attentive Energy will periodically prepare and send a project newsletter to FRs to provide regular updates on the status of the Project, major developments, regulatory activities, and information/updates on topics important to the fishing community. The newsletter will be delivered to FRs via email.</p>
Website Updates	<p>Attentive Energy will regularly update its project website with information and news about the Project.</p>

Fisheries Communications Plan for the Attentive Energy Offshore Wind Project

Engagement Activity	Description
Other	Other engagement activities may include identification of new Project team members or FRs to support coordination with fishing communities; distribution of hardcopy or digital letters and invitations to participate in survey planning calls or other Project-related meetings or events; development and distribution of plans, progress reports, documents, tools, or other materials; attendance or support for fishing-related events; participation in other Project related and/or community engagement activities; and execution of other outreach and information gathering and sharing activities.

Key:

FR-fisheries representative

Table A-1 (Attachment A) summarizes the specific engagement activities that are anticipated to take place during different stages of the Project. Attentive Energy’s FL will maintain and update engagement information and share a copy of Table A-1 with the biannual Progress Reports (see Section 2.2.2). Attentive Energy will only use this information for fisheries outreach activities and will not make any personal information available to the general public. Attentive Energy understands that some fisheries information, such as fishing sites, can be commercially sensitive. As needed to best understand fishermen’s specific concerns or potential impacts, Attentive Energy will work with the individual fishing organization or fisherman to establish confidentiality agreements for the purpose of sharing information.

SECTION 6 – CONCLUSION

Attentive Energy believes fishing communities can and should play an important role in the development of the offshore wind industry in the United States. Attentive Energy believes that developing this Plan and identifying approaches and activities for achieving engagement objectives is one of many steps in building a meaningful and productive relationship with fishing communities. Through regular and meaningful engagement, trust can be built, potential conflicts can be reduced or avoided, and parties can successfully work together to deliver offshore wind opportunities to strengthen and empower communities, forge a new industry, and build an inclusive clean energy economy.

**ATTACHMENT A. FISHERIES ENGAGEMENT ACTIVITIES AND
KEY PERFORMANCE INDICATORS TRACKING TABLE FOR
THE ATTENTIVE ENERGY OFFSHORE WIND PROJECT**

Table A-1. Fisheries Engagement Activities, Approaches, and Key Performance Indicators

Engagement Approach by Project Phase	Engagement Activity (virtual meeting, meeting, electronic newsletter, website update, other)	Planned/ Progress/ Completed	In Timing/ Frequency	Description/ Topics Discussed	Significant Outcomes (including people reached, feedback received, issues or concerns identified, and decisions made)
<i>Pre-Lease Award and Initial Outreach</i>					
Fisheries Liaison	Outreach and Engagement Support	Completed	Prior to lease award	Attentive Energy will hire a dedicated Fisheries Liaison.	Attentive Energy hired a dedicated Fisheries Liaison in 2019.
Fisheries Representatives	Outreach and Engagement Support	In Progress	On-going, with a goal of establishing a representative network by September 2022	Attentive Energy will identify a network of Fisheries Representatives with established relationships with fishing communities in and around the Lease Area.	<i>A summary of significant outcomes will be provided once this activity has been completed.</i>
Fishing Community	Direct Mail; Survey	In Progress	On-going	Attentive Energy will gather contact information for and establish contacts with the fishing community and fisheries management state agencies, councils, commissions, harbor masters, industry associations and other stakeholders.	In October 2020, Attentive Energy launched its first direct mail and online fishing community survey to over 3,000 fishermen and mariners in the New York Bight to establish contacts in the fishing community. The survey was recently updated, and fishermen are encouraged to share their information and feedback at www.attentiveenergy.com/fishermen .
Fisheries resources	Outreach and Engagement Support	In Progress	On-going	Attentive Energy will identify fishing resources and activities in and around the Lease Area.	Based on Attentive Energy's initial outreach and engagement with the fishing communities of the NYB, those fisheries most likely to be affected by the construction and operations of the Project include those that make use of the following fishing methods: bottom trawl, mid-water trawl, sink gillnets, scallop dredges, hydraulic clam dredges, trap/pot, bottom longline, purse seine, and hook and line. These techniques cover several economically important species within the NYB including Atlantic Sea Scallops, Black Seabass, Surfclams, Golden Tilefish, Mink Fish, American Lobster, Atlantic Mackerel, Longfin and Northern Shortfinned Squids, and several highly migratory species.
<i>Fisheries Communications Plan ("Plan") Development</i>					
Plan submission and invitation for feedback	Distribution of Plan; Website	Complete	Prior to 120 days after lease execution	Attentive Energy will draft a comprehensive and detailed Plan.	Attentive Energy published two versions of the Plan in 2020; a third version of the Plan (this current Plan) will be distributed to Fisheries Representatives for review and input, which will be used to guide any additional necessary revisions to the Plan. <i>A summary of significant outcomes will be provided once this activity has been completed.</i>
Revised Plan submission	Distribution of Plan; Website	Planned	As needed over the life of the Project	Attentive Energy will submit a revised Plan to FRs and agencies, as appropriate, that incorporates feedback received from the FRs. The Plan will be made publicly available on the Attentive Energy website www.attentiveenergy.com .	<i>A summary of significant outcomes will be provided once this activity has been completed.</i>
<i>Site Assessment/Characterization Engagement Activities</i>					
Project update communications	Progress Report; Website	Planned	On-going; starting in 2022	Attentive Energy will provide fishing communities regular Project site assessment and	<i>A summary of significant outcomes will be provided once this activity has been completed.</i>



Fisheries Communications Plan for the Attentive Energy Offshore Wind Project

				characterization updates through emails, electronic newsletters, and website updates. Attentive Energy will submit progress reports every 6 months (or as BOEM otherwise directs) summarizing engagement activities with fishing communities and stakeholders during the site assessment term. Progress reports will be made available on the Attentive Energy website (www.attentiveenergy.com).	
Data management and sharing	Information Gathering and Sharing	Planned	Late 2022	Attentive Energy will develop a reliable and user-friendly report to record and use data collected through resource surveys of the Lease Area. To the degree possible and practicable, raw data collected from resource surveys will be submitted to the appropriate public databases, as outlined by the New York State Environmental Technical Working Group's ("E-TWG") "Wildlife Data Standardization and Sharing: Environmental Data Transparency for New York State Offshore Wind Energy". ^a	<i>A summary of significant outcomes will be provided once this activity has been completed.</i>
Project update meetings with FRs and others	Virtual or In-Person Meetings	Planned	On-going	Attentive Energy will meet with FRs and other parties virtually or in-person (as preferred, agreed upon, and/or requested by the FR or party) to share Project site assessment and characterization updates and to solicit feedback on or share results from Project plans, studies, surveys, communications, or other relevant topics.	<i>A summary of significant outcomes will be provided once this activity has been completed.</i>
Project and resource information sharing	Information Gathering and Sharing	In Progress	On-going	Develop outreach materials including non-promotional fact sheets on issues of concern to the fishing community, science-based resources on offshore wind development, and Project-specific information to support Attentive Energy's commitments to fisheries engagement.	Outreach materials for fishing communities are currently being developed and will be made available through the Attentive Energy website (www.attentiveenergy.com). <i>A summary of significant outcomes will be provided once this activity has been completed.</i>
Attend community events	In-Person Meetings; Information Gathering and Sharing	In Progress	On-going	Continue to collaborate with other offshore wind developers by co-hosting regularly scheduled port hours to attend and be available to answer questions posed by the fishing community.	Port hours are currently held on the first Thursday and Friday of each month in New Bedford, MA and Point Judith Rhode Island, respectively. <i>A summary of significant outcomes will be provided once this activity has been completed.</i>
Attend fisheries management meetings	In-Person Meetings; Information Gathering and Sharing	In Progress	On-going	The FL will attend fisheries management meetings, as appropriate for the meeting agenda, to provide updates and engage with fishing industry leaders.	Attentive Energy has been an active attendee of the Mid-Atlantic Fisheries Management Council and New England Fisheries Management Council meetings. In attending these fisheries management council meetings, Attentive Energy has been able to familiarize council Members and members of the fishing community at large with the Project.
Implement gear loss claims procedure	Tool	In Progress	Prior to geotechnical and geophysical (G&G) survey operations in 2022	Develop guidelines for gear interactions and a streamlined "Gear Loss Claims" procedure whereby fishermen can submit claims to Attentive Energy.	<i>A summary of significant outcomes will be provided once this activity has been completed.</i>



Fisheries Communications Plan for the Attentive Energy Offshore Wind Project

Identify key information outlets	Information Gathering and Sharing	In Progress	On-going	Identify key information outlets trusted by the fishing community for disseminating information about Attentive Energy and the Project. These outlets may include trade journals, blogs, websites, local newspapers, and third-party spokespersons.	<i>A summary of significant outcomes will be provided once this activity has been completed.</i>
Notice to Mariners	Tool; Information Gathering and Sharing	Planned	As needed in conjunction with on-water activities	Distribute a Notice to Mariners two (2) weeks prior to commencement of surveys.	<i>A summary of significant outcomes will be provided once this activity has been completed.</i>

^a New York State Environmental Technical Working Group (E-TWG). 2021. Wildlife Data Standardization and Sharing: Environmental Data Transparency for New York State Offshore Wind Energy. Final Report. Available at: <https://tethys.pnnl.gov/sites/default/files/publications/NYSERDA-Data-Standardization-Sharing.pdf>.

