



## Marine Activity Update (current as of March 2023)

---

**Status:** *ACTIVE*

### **Overview:**

Attentive Energy has contracted TDI-Brooks International and Fugro to perform high resolution geophysical and geotechnical surveys in support of its New York Bight Project (in BOEM Lease Area OCS-A 0538). These survey operations are active.

The intent of the reconnaissance geophysical survey is to acquire multibeam echosounder, side scan sonar, gradiometer, parametric sub-bottom profiler and high-resolution 2D seismic data of such resolution and quality to be able to fully characterize the seafloor and the shallow subsurface. Geotechnical surveys will be conducted to acquire soil samples and ground conditions to determine future design parameters for our project site and to fulfill the applicable regulatory requirements stipulated by the Bureau of Ocean Energy Management (BOEM) and National Oceanic and Atmospheric Administration Fisheries (NOAA Fisheries).

### **Schedule:**

The RV Miss Emma McCall is expected to continue operations through March 2023. The PSV Regulus will continue operations through April 2023.

---

### **Vessel(s) Involved:**



**RV Miss Emma McCall**

**Call Sign: WDG8742**

**Captain: Mark Mitcheltree**

**OFL: Bruce Bannick**

RV Miss Emma McCall is a 153-foot (47m) vessel with a top speed of 11 knots. During survey operations for Attentive Energy, the vessel will mobilize to/from Uncasville, CT. Geophysical surveys are being conducted with primary tracklines spaced at 150-meter (492-foot) intervals and tielines spaced at 500-meter (1,640-foot) intervals.

During survey operations the vessel normally transits at 4 knots. Mariners are requested to keep a safe distance and approach with caution.

The RV Miss Emma McCall can be reached via VHF-FM radio using normal hailing frequencies. An Offshore Fisheries Liaison (OFL) is aboard the vessel during survey operations to answer any fishing related questions and/or to coordinate with fishing vessels in the area.



## **PSV Regulus**

**Call Sign: WDG8927**

**Captain: Carl Lee**

**OFL: Phil Shantz**

The PSV Regulus is a 272-foot (83m) vessel with a cruising speed of 11 knots. During survey operations for Attentive Energy, the vessel will mobilize to/from New York Harbor. PSV Regulus is conducting stationary geotechnical survey operations using a seabed testing frame unit and geotechnical drilling rig through April 2023. The survey area is bounded by the following approximate positions:

NW Corner: 39° 54'N / 73° 15'W

NE Corner: 39° 41'N / 73° 00'W

SE Corner: 39° 34'N / 73° 03'W

SW Corner: 39° 43'N / 73° 22'

The PSV Regulus will be in operations 24 hours a day, 7 days per week. The PSV Regulus will be restricted in her ability to maneuver for extended periods (up to 72 hours) and is requesting mariners operating in, or transiting, the area to give a 1 nm CPA.

The PSV Regulus can be reached via VHF-FM radio using normal hailing frequencies. An Offshore Fisheries Liaison (OFL) is aboard the vessel during survey operations to answer any fishing related questions and/or to coordinate with fishing vessels in the area.

---

## **Protected Species Precautions:**

Attentive Energy is committed to ensuring the protection of marine mammals and other marine life within the lease area and the greater NY Bight. Aboard the RV Miss Emma McCall, Passive Acoustic Monitoring (PAM) operators are constantly monitoring for the presence of marine mammals. Both the RV Miss Emma McCall and the PSV Regulus are staffed through the entirety of survey operations by trained, professional Protected Species Observers (PSO). PSOs are approved through NOAA Fisheries and constantly monitor for the presence of species protected under the Endangered Species Act and Marine Mammal Protection Act. Attentive Energy takes these sightings seriously and will not begin geophysical or geotechnical operations if marine mammals are sighted within the distances stipulated in federal permits. If during geophysical survey operations (RV Miss Emma McCall), a marine mammal sighting occurs within these respective distances, shut down procedures are implemented.



Attentive Energy is developing an offshore wind energy project in BOEM Lease Area (OCS-A 0538) to meet the demand for renewable energy in New York and New Jersey.

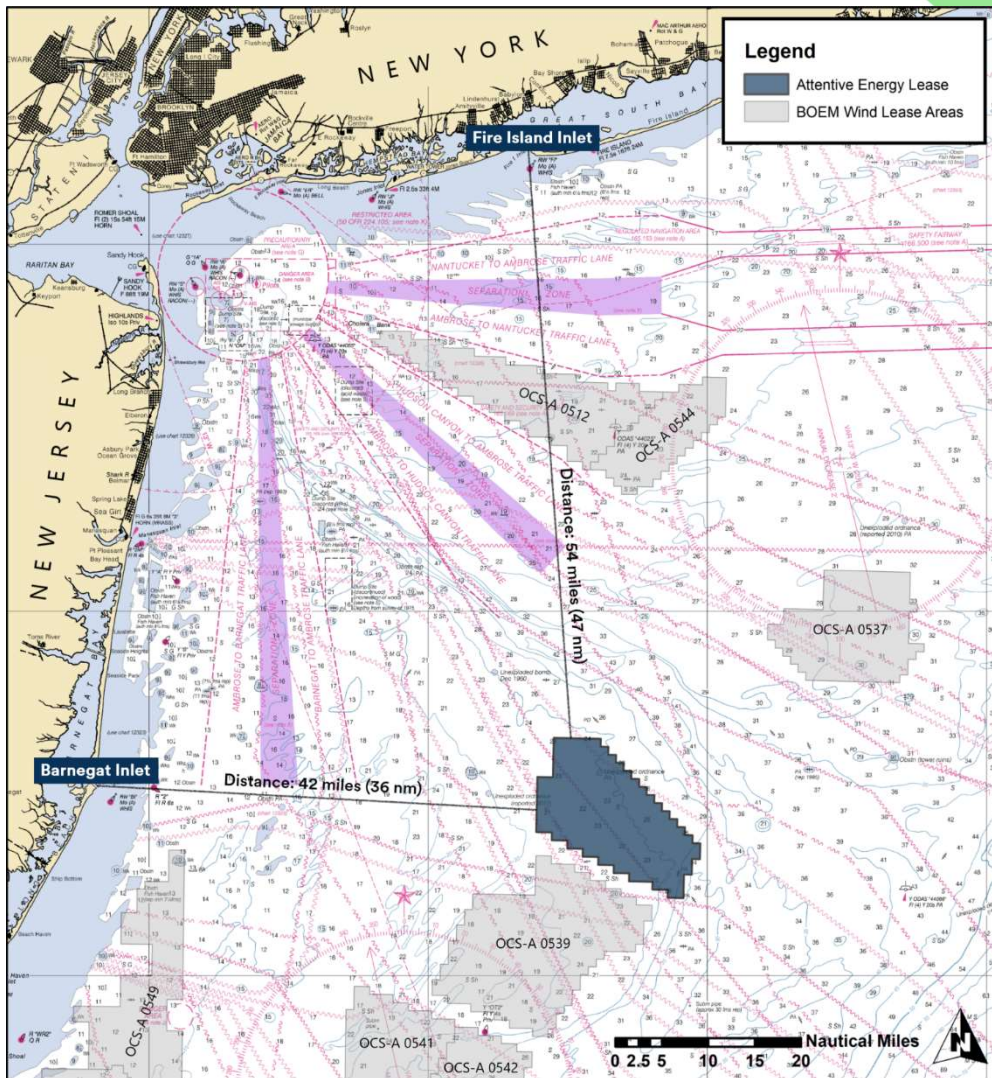


Chart not to be used for navigation.

Get the latest updates on our website at:

<https://attentiveenergy.com/fishermen/>

Attentive Energy welcomes your feedback, please contact our team:

**Fisheries Liaison**

Sebastian Velez

[sebastian.velez@totalenergies.com](mailto:sebastian.velez@totalenergies.com)

+1 908-902-2686

**Marine Affairs Manager**

Brian LeFebvre

[brian.lefebvre@totalenergies.com](mailto:brian.lefebvre@totalenergies.com)

+1 202-997-8074