



Marine Activity Update (current as of August 2023)

Status: *ACTIVE*

Overview:

Attentive Energy has contracted TDI-Brooks International to perform high resolution geophysical and geotechnical surveys in support of its New York Bight Project (in BOEM Lease Area OCS-A 0538). These survey operations are active.

Schedule:

The RV Miss Emma McCall, RV Brooks McCall, and MV Marcelle Bordelon are expected to continue operations through August 2023.

Vessels Involved:

RV Miss Emma McCall



Call Sign: WDG8742

Fisheries Liaison: Edward An

RV Miss Emma McCall is a 153-foot (47m) vessel with a top speed of 11 knots. During survey operations for Attentive Energy, the vessel will mobilize to/from Uncasville, CT. Geophysical surveys are being conducted with primary tracklines spaced at 150-meter (492-foot) intervals and tielines spaced at 500-meter (1,640-foot) intervals.

During survey operations the vessel normally transits at 4 knots. Mariners are requested to keep a safe distance and approach with caution.

The RV Miss Emma McCall can be reached via VHF-FM radio using normal hailing frequencies. A Fisheries Liaison (FL) is aboard the vessel during survey operations to answer any fishing related questions and/or to coordinate with fishing vessels in the area.

MV Marcelle Bordelon



Call Sign: WDJ2038

The MV Marcelle Bordelon is a 180-foot (54.8m) vessel with a top speed of 10.5 knots. It will be conducting survey work in and around the Attentive Energy Lease area through the end of August.

The MV Marcelle Bordelon can be reached via VHF-FM radio using normal hailing frequencies.

RV Brooks McCall



Call Sign: WCZ7811

Fisheries Liaison: TBA

The RV Brooks McCall is a 159-foot (48.5m) vessel with a top speed of 11 knots. It will be conducting survey work in and around the Attentive Energy Lease area from August 14 through the end of the month.

The RV Brooks McCall can be reached via VHF-FM radio using normal hailing frequencies. A Fisheries Liaison will be aboard the vessel during survey operations to answer any fishing related questions and/or to coordinate with fishing vessels in the area.

Lease Area (OCS-A 0538)

Attentive Energy is developing an offshore wind energy project in BOEM Lease Area (OCS-A 0538) to meet the demand for renewable energy in New York and New Jersey.

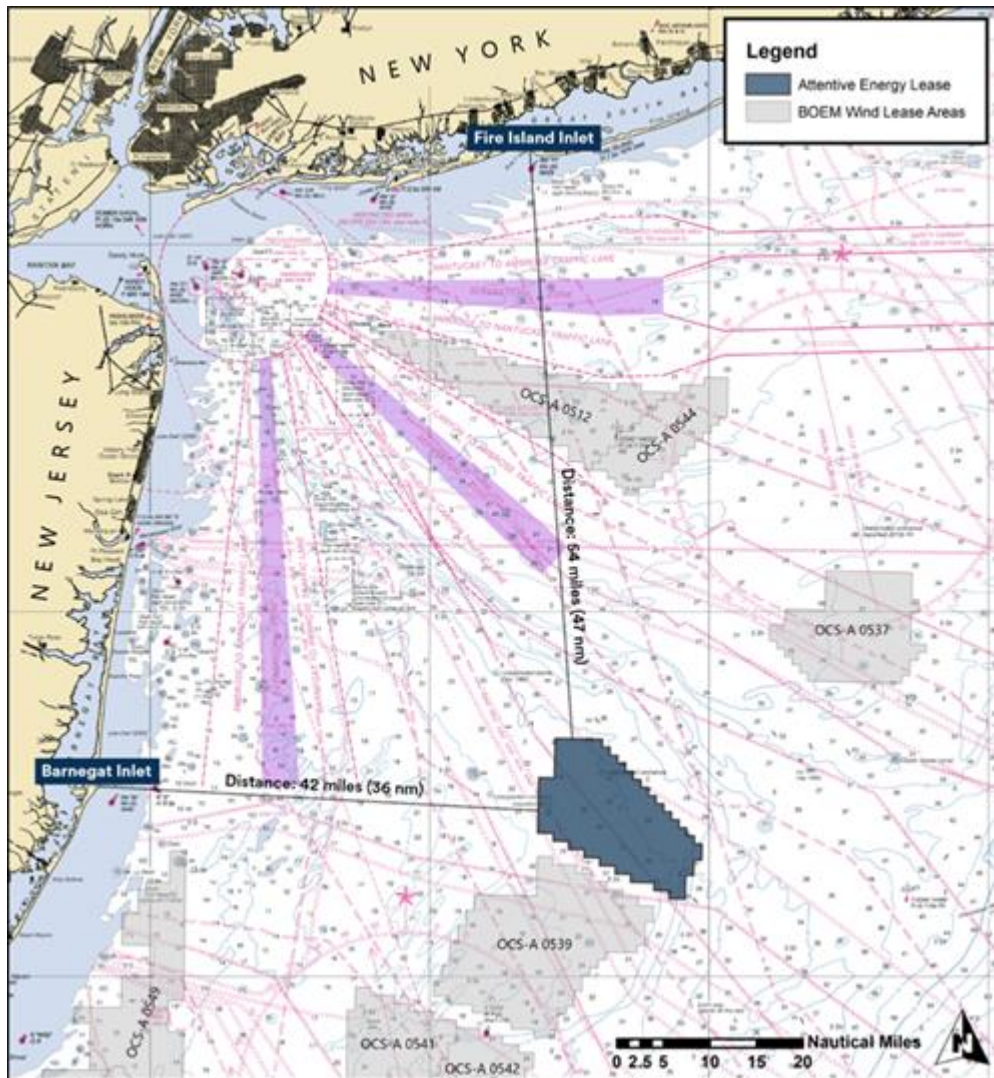
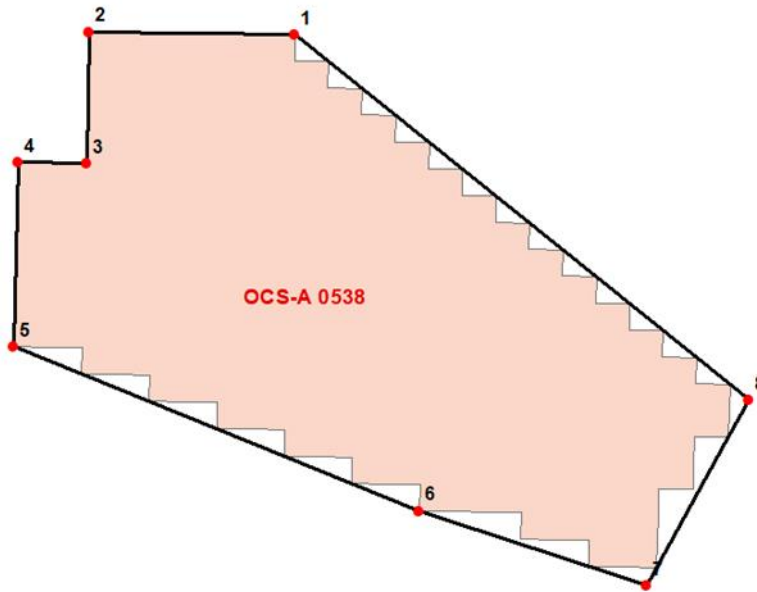


Chart not to be used for navigation.

The Attentive Energy Lease Area (OCS-A 0538) is 131.7 square miles, located 36 nautical miles east of Barnegat Inlet, NJ and 47 nautical miles south of Fire Island Inlet, NY. Attentive Energy has compiled a short list of coordinates outlining the Lease Area to accommodate easy entry into GPS navigational

plotters. Once plotted, the outline of the Lease Area can be used as a reference during fishing and transiting in and around the Lease Area. Please see the list of coordinates below in both DDS and DDM:



GPS Coordinates (DMS)

1. 39° 49' 33,289" N 073° 11' 28,101" W
2. 39° 49' 37,900" N 073° 16' 30,848" W
3. 39° 46' 23,370" N 073° 16' 35,707" W
4. 39° 46' 24,856" N 073° 18' 16,548" W
5. 39° 41' 52,506" N 073° 18' 23,219" W
6. 39° 37' 49,828" N 073° 08' 25,127" W
7. 39° 35' 59,640" N 073° 02' 49,773" W
8. 39° 40' 34,115" N 073° 00' 18,639" W

GPS Coordinates (DDM)

1. 39° 49.5548' N 073° 11.4684' W
2. 39° 49.6317' N 073° 16.5141' W
3. 39° 46.3895' N 073° 16.5951' W
4. 39° 46.4143' N 073° 18.2758' W
5. 39° 41.8751' N 073° 18.387' W
6. 39° 37.8305' N 073° 08' W
7. 39° 35.994' N 073° 02.8295' W
8. 39° 40.5686' N 073° 00.3106 W

Protected Species Precautions:

Attentive Energy is committed to ensuring the protection of marine mammals and other marine life within the lease area and the greater NY Bight. Aboard the RV Miss Emma McCall, Passive Acoustic Monitoring (PAM) operators are constantly monitoring for the presence of marine mammals. Both the RV Miss Emma McCall and the PSV Regulus are staffed through the entirety of survey operations by trained, professional Protected Species Observers (PSO). PSOs are approved through NOAA Fisheries and constantly monitor for the presence of species protected under the Endangered Species Act and Marine Mammal Protection Act. Attentive Energy takes these sightings seriously and will not begin geophysical or geotechnical operations if marine mammals are sighted within the distances stipulated in federal permits. If during geophysical survey operations (RV Miss Emma McCall), a marine mammal sighting occurs within these respective distances, shut down procedures are implemented.

Survey Objectives:

The intent of the geophysical survey is to acquire multibeam echosounder, side scan sonar, gradiometer, parametric sub-bottom profiler and high-resolution 2D seismic data to fully characterize the seafloor and the shallow subsurface. Geotechnical surveys acquire soil samples and ground conditions to inform future design parameters for the project site and to fulfill the applicable regulatory requirements stipulated by the Bureau of Ocean Energy Management (BOEM)

and National Oceanic and Atmospheric Administration Fisheries (NOAA Fisheries).

We Want Your Feedback:

Attentive Energy is working closely with Fisheries Representatives, both commercial and recreational, as well as the wider fishing and mariner communities to gain feedback on fishing practices and navigation through and around the Lease Area. Attentive Energy invites you to complete the Fishing & Mariner Community Survey at:

<https://attentiveenergy.com/fishermen/>

Feedback can also be given directly to Attentive Energy's Fisheries Liaison and Marine Affairs Manager.

Get the latest updates on our website at:

<https://attentiveenergy.com/fishermen/>

Attentive Energy welcomes your feedback, please contact our team:

Fisheries Liaison Officer

Sebastian Velez

sebastian.velez@totalenergies.com

+1 908-902-2686

Marine Affairs Manager

Brian LeFebvre

Brian.lefebvre@totalenergies.com

+1 202-997-8074