



Marine Activity Update (current as of November 2023)

Status: *ACTIVE*

Overview:

Attentive Energy has contracted TDI-Brooks International to perform high resolution geophysical and geotechnical surveys in support of its New York Bight Project (in BOEM Lease Area OCS-A 0538). These survey operations are active.

Schedule:

The RV Miss Emma McCall will continue geophysical operations in the Lease Area and the MV Marcelle Bordelon will continue geophysical survey operations along potential export cable routes between the Lease Area, New York, and New Jersey through November 2023. The fishing vessel Moonshine will serve as a scout vessel for the MV Marcelle Bordelon.

Vessels Involved:

RV Miss Emma McCall



Call Sign: WDG8742

Fisheries Liaison: Tom Donovan

RV Miss Emma McCall is a 153-foot (47m) vessel with a top speed of 11 knots. During survey operations for Attentive Energy, the vessel will mobilize to/from ports in Connecticut and New York. Geophysical surveys are being conducted with primary tracklines spaced at 150-meter (492-foot) intervals and tielines spaced at 500-meter (1,640-foot) intervals.

During survey operations the vessel normally transits at 4 knots. Mariners are requested to keep a safe distance and approach with caution.

The RV Miss Emma McCall can be reached via VHF-FM radio using channel 16. A Fisheries Liaison (FL) is aboard the vessel during survey operations to answer any fishing related questions and/or to coordinate with fishing vessels in the area.

MV Marcelle Bordelon



Call Sign: WDJ2038

Fisheries Liaison: Scott Garvey

The MV Marcelle Bordelon is a 180-foot (54.8m) vessel with a top speed of 10.5 knots. During survey operations for Attentive Energy, the vessel will mobilize to/from ports in Connecticut and New York. It will be conducting geophysical survey work on potential export cable routes between the Lease Area, New York, and New Jersey as seen in the figure below.

The MV Marcelle Bordelon can be reached via VHF-FM radio using channel 16. A Fisheries Liaison (FL) is aboard the vessel during survey operations to answer any fishing related questions and/or to coordinate with fishing vessels in the area.

FV Moonshine



The FV Moonshine is a 43-foot (13.1m) vessel with a top speed of 20 knots and a cruising speed of 15 knots. During operations for Attentive Energy, the Moonshine will scout ahead of the MV Marcelle Bordelon to identify and resolve potential gear interactions. The FV Moonshine can be reached via VHF-FM radio using channel 16.

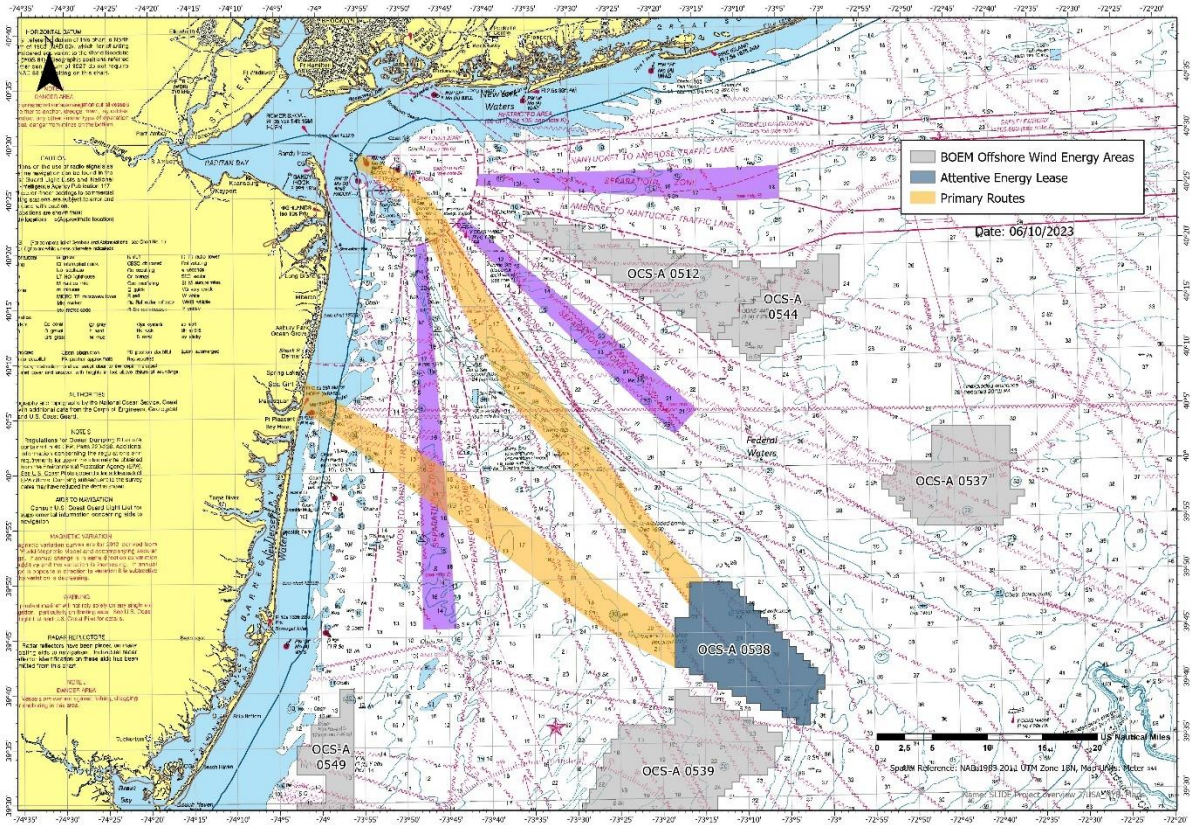


Chart not to be used for navigation.

Lease Area (OCS-A 0538)

Attentive Energy is developing an offshore wind energy project in BOEM Lease Area (OCS-A 0538) to meet the demand for renewable energy in New York and New Jersey.

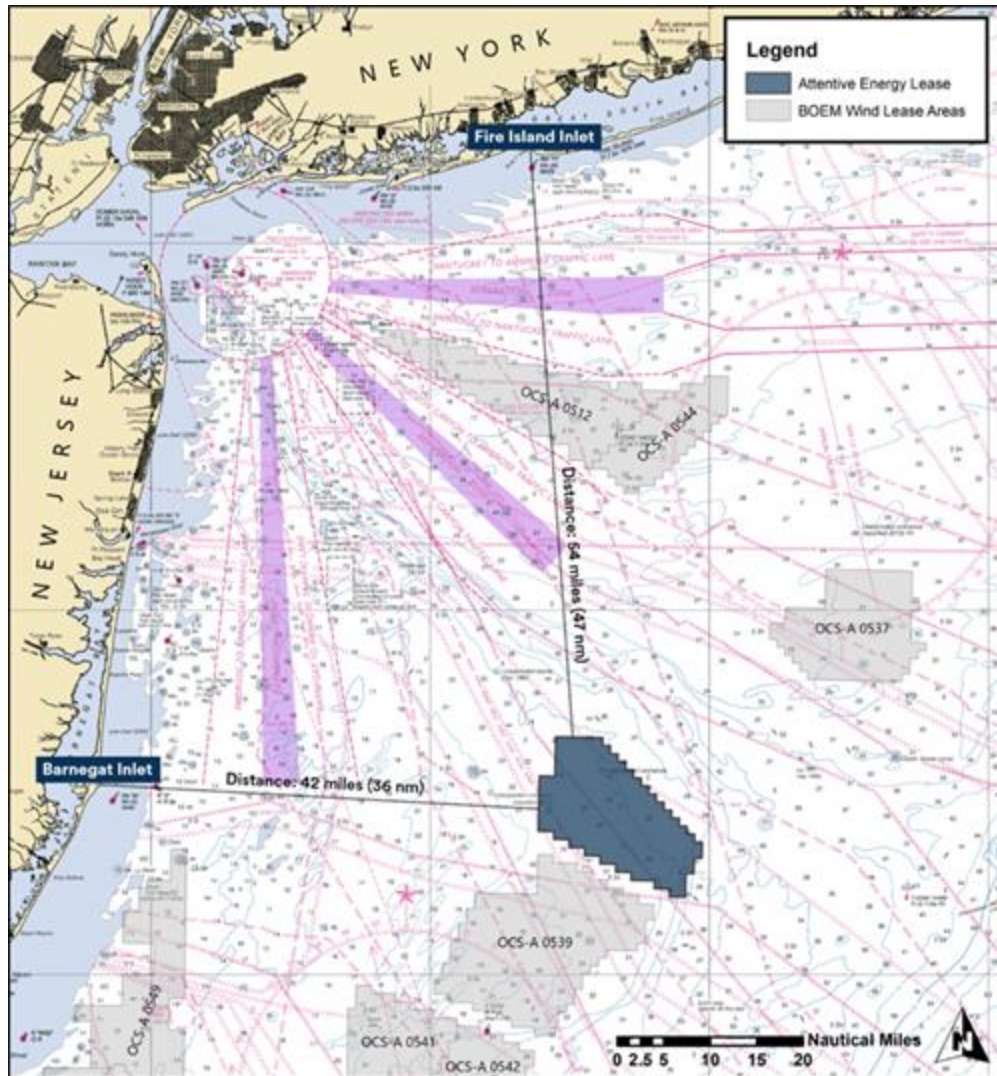
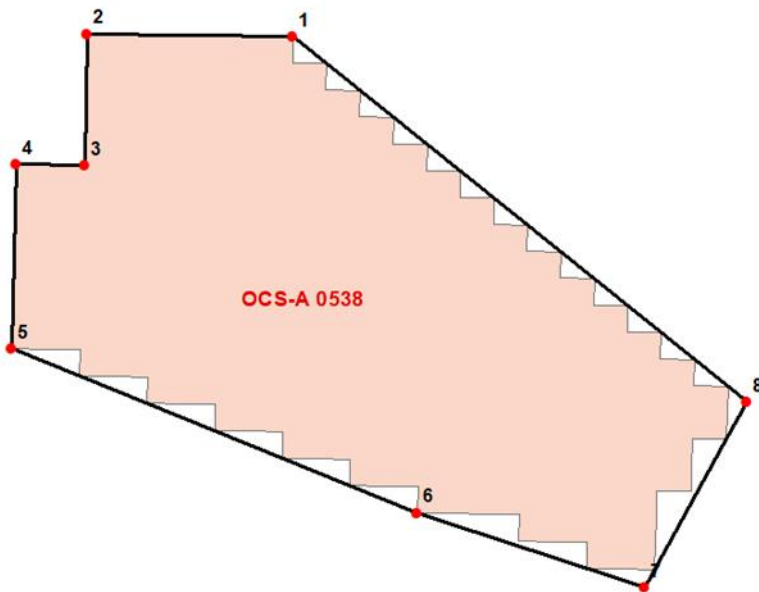


Chart not to be used for navigation.

The Attentive Energy Lease Area (OCS-A 0538) is 131.7 square miles, located 36 nautical miles east of Barnegat Inlet, NJ and 47 nautical miles south of Fire Island Inlet, NY. Attentive Energy has compiled a short list of coordinates outlining the Lease Area to accommodate easy entry into GPS navigational plotters. Once plotted, the outline of the Lease Area can be used as a reference during fishing and transiting in and around the Lease Area. Please see the list of coordinates below in both DMS and DDM:



GPS Coordinates (DMS)

1. 39° 49' 33,289" N 073° 11' 28,101" W
2. 39° 49' 37,900" N 073° 16' 30,848" W
3. 39° 46' 23,370" N 073° 16' 35,707" W
4. 39° 46' 24,856" N 073° 18' 16,548" W
5. 39° 41' 52,506" N 073° 18' 23,219" W
6. 39° 37' 49,828" N 073° 08' 25,127" W
7. 39° 35' 59,640" N 073° 02' 49,773" W
8. 39° 40' 34,115" N 073° 00' 18,639" W

GPS Coordinates (DDM)

1. 39° 49.5548' N 073° 11.4684' W
2. 39° 49.6317' N 073° 16.5141' W
3. 39° 46.3895' N 073° 16.5951' W
4. 39° 46.4143' N 073° 18.2758' W
5. 39° 41.8751' N 073° 18.387' W
6. 39° 37.8305' N 073° 08' W
7. 39° 35.994' N 073° 02.8295' W
8. 39° 40.5686' N 073° 00.3106 W

Protected Species Precautions:

Attentive Energy is committed to ensuring the protection of marine mammals and other marine life within the lease area and the greater NY Bight. Aboard the RV Miss Emma McCall, Passive Acoustic Monitoring (PAM) operators are constantly monitoring for the presence of marine mammals. The RV Miss Emma McCall and the Marcelle Bordelon are also staffed through the entirety of survey operations by trained, professional Protected Species Observers (PSO). PSOs are approved through NOAA Fisheries and constantly monitor for the presence of species protected under the Endangered Species Act and Marine Mammal Protection Act. Attentive Energy takes these sightings seriously and will not begin geophysical or geotechnical operations if marine mammals are sighted within the distances stipulated in federal permits. If during geophysical survey operations, a marine mammal sighting occurs within these respective distances, shut down and ramp up procedures are implemented.

Survey Objectives:

The intent of the geophysical survey is to acquire multibeam echosounder, side scan sonar, gradiometer, parametric sub-bottom profiler and high-resolution 2D seismic data to fully characterize the seafloor and the shallow subsurface. Geotechnical surveys acquire soil samples and ground conditions to inform future design parameters for the project site and to fulfill the applicable regulatory requirements stipulated by the Bureau of Ocean Energy Management (BOEM)

and National Oceanic and Atmospheric Administration Fisheries (NOAA Fisheries). The soil and ground information will be used to develop ground models and design the technical parameters/build of our offshore wind project.

We Want Your Feedback:

Attentive Energy is working closely with Fisheries Representatives, both commercial and recreational, as well as the wider fishing and mariner communities to gain feedback on fishing practices and navigation through and around the Lease Area. Attentive Energy invites you to complete the Fishing & Mariner Community Survey at:

<https://attentiveenergy.com/fishermen/>

Feedback can also be given directly to Attentive Energy's Fisheries Liaison and Marine Affairs Manager.

Get the latest updates on our website at:

<https://attentiveenergy.com/fishermen/>

Attentive Energy welcomes your feedback, please contact our team:

Fisheries Liaison Officer

Sebastian Velez

sebastian.velez@totalenergies.com

+1 908-902-2686

Marine Affairs Manager

Brian LeFebvre

Brian.lefebvre@totalenergies.com

+1 202-997-8074