



Marine Activity Update (current as of December 2023)

Status: *ACTIVE*

Overview:

Attentive Energy has contracted TDI-Brooks International to perform high resolution geophysical and geotechnical surveys in support of its New York Bight Project (in BOEM Lease Area OCS-A 0538). These survey operations are active.

Schedule:

The RV Miss Emma McCall will continue geophysical operations in the Lease Area and the MV Marcelle Bordelon will continue geophysical survey operations along potential export cable routes between the Lease Area, New York, and New Jersey through December 2023. The fishing vessel Jamie's Toy will serve as a scout vessel for the MV Marcelle Bordelon.

Vessels Involved:

RV Miss Emma McCall



Call Sign: WDG8742

Fisheries Liaison: Eric Hannan

RV Miss Emma McCall is a 153-foot (47m) vessel with a top speed of 11 knots. During survey operations for Attentive Energy, the vessel will mobilize to/from ports in Connecticut and New York. Geophysical surveys are being conducted with primary tracklines spaced at 150-meter (492-foot) intervals and tielines spaced at 500-meter (1,640-foot) intervals.

During survey operations the vessel normally transits at 4 knots. Mariners are requested to keep a safe distance and approach with caution.

The RV Miss Emma McCall can be reached via VHF-FM radio using channel 16. A Fisheries Liaison (FL) is aboard the vessel during survey operations to answer any fishing related questions and/or to coordinate with fishing vessels in the area.

MV Marcelle Bordelon



Call Sign: WDJ2038

Fisheries Liaison: Edwin Lee

The MV Marcelle Bordelon is a 180-foot (54.8m) vessel with a top speed of 10.5 knots. During survey operations for Attentive Energy, the vessel will mobilize to/from ports in Connecticut and New York. It will be conducting geophysical survey work on potential export cable routes between the Lease Area, New York, and New Jersey as seen in the figure below.

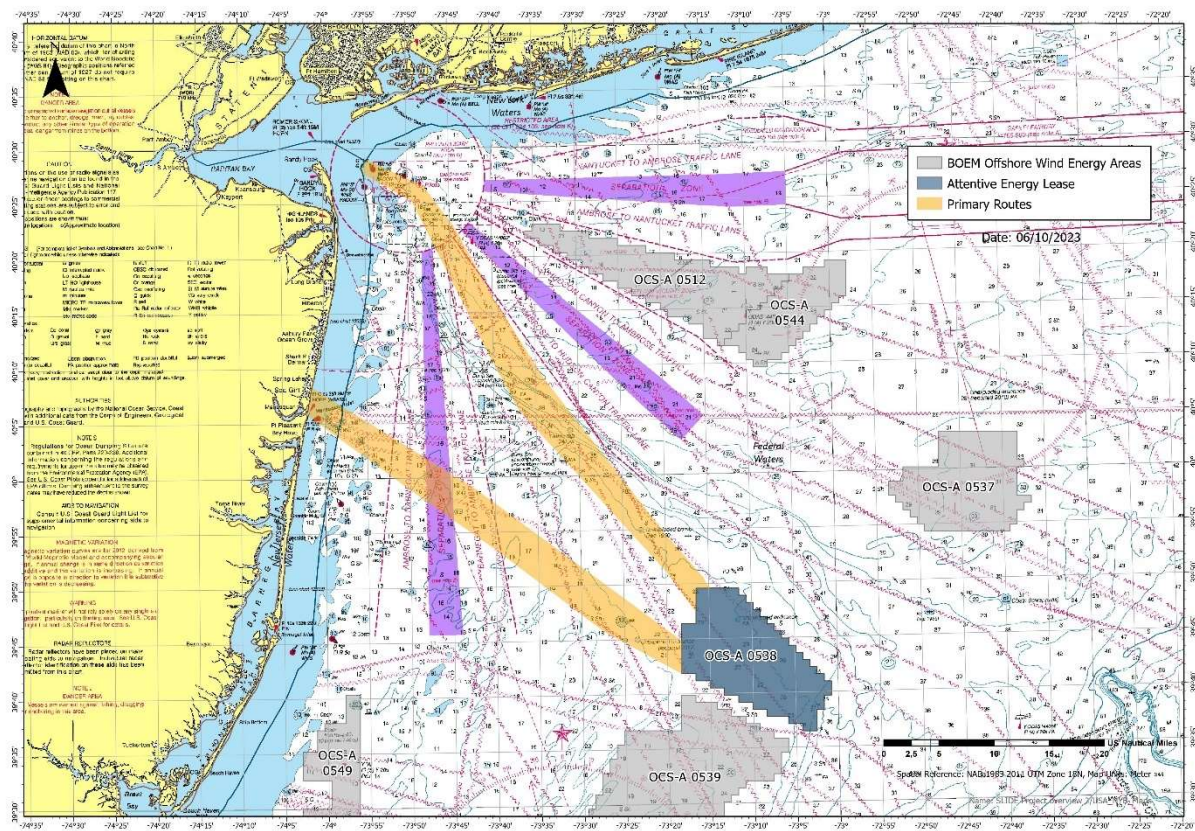


Chart not to be used for navigation.

The MV Marcelle Bordelon can be reached via VHF-FM radio using channel 16. A Fisheries Liaison (FL) is aboard the vessel during survey operations to answer any fishing related questions and/or to coordinate with fishing vessels in the area.

FV Jamie's Toy



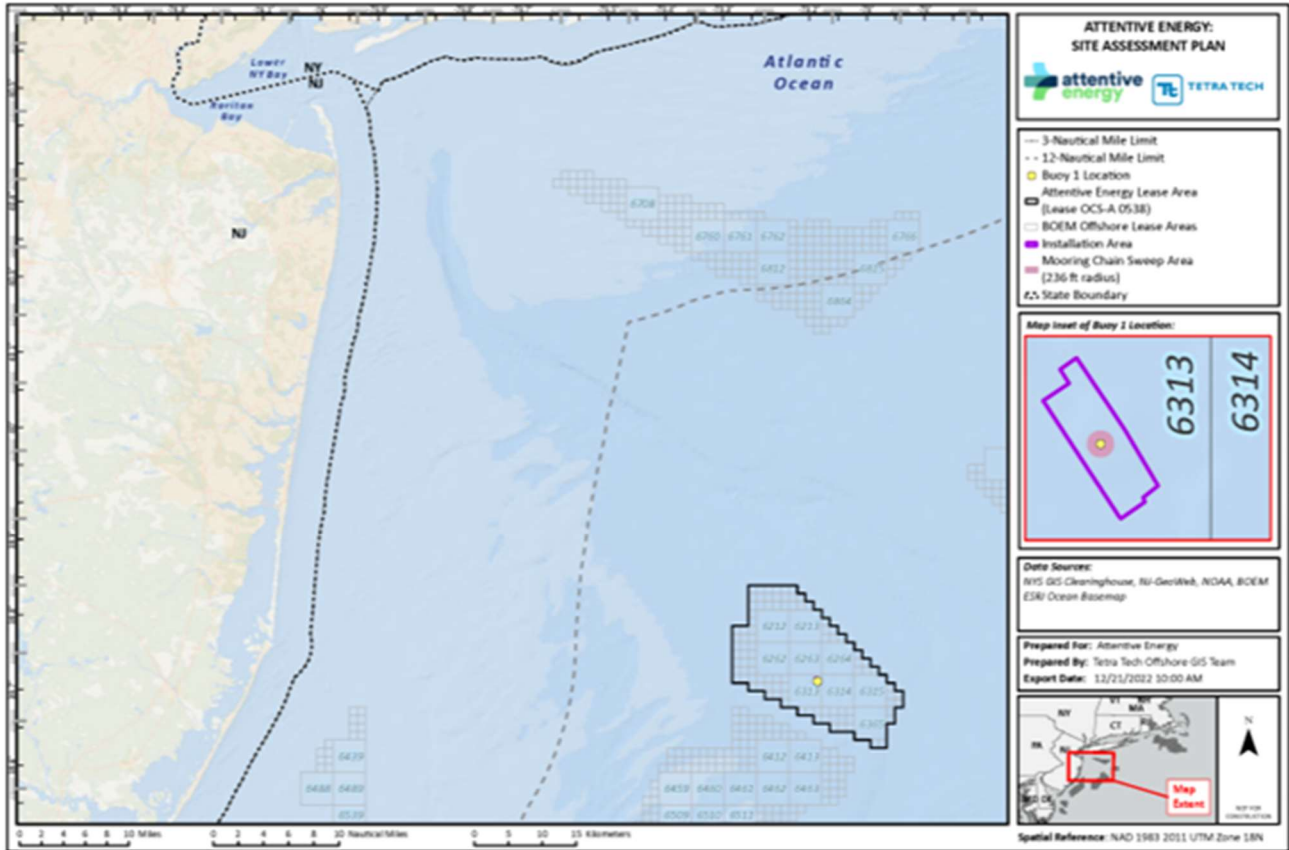
The FV Jamie's Toy is a 46-foot (14.02m) vessel with a top speed of 35 knots and a cruising speed of 23 knots. During operations for Attentive Energy, the Jamie's Toy will scout ahead of the MV Marcelle Bordelon to identify and resolve potential gear interactions. The FV Jamie's Toy can be reached via VHF-FM radio using channel 16.

Weather Buoy Deployment: FliDAR Buoy and Seabed Frame

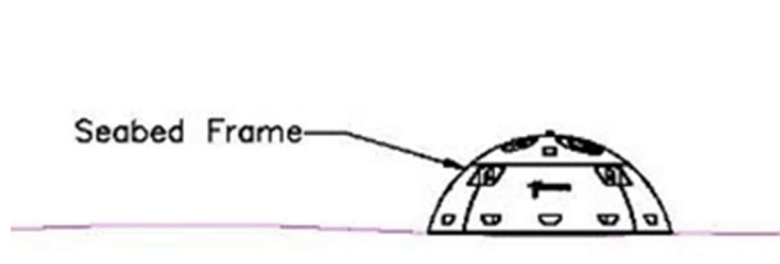
A meteorological buoy will be deployed in position 39-41-52.440 N, 073-09-34.950 W, located 47 nautical miles east of Surf City, New Jersey in mid-December 2023 and will remain in position through December 2024. The buoy will collect meteorological data for offshore wind energy development and will be deployed by Fugro USA Marine, Inc. from the M/V Go Adventurer (Radio Call Sign: WDM7780). Deployment operations are expected on December 15, 2023, and once started will be completed in under 24 hours. M/V Go Adventurer will monitor VHF-radio channels 16 & 13.

The buoy is a Fugro Seawatch Wind LiDAR Buoy (SWLB092). The buoy is colored yellow, 10 feet (3 meters) in diameter, and lit from sunset to sunrise with a quick flashing yellow light (4 nautical mile range). The light flashes yellow for 5 one second flashes every 20 seconds. The buoy will transmit an AIS signal as Type: ATON/Physical, Name: SWLB092 with MMSI No. 993663043. The buoy extends 16 feet (5 meters) above and 10 feet (3 meters) below the waterline. The buoy is anchored to the seabed with a 6,000-pound (3 ton) seabed anchor. The swing radius is approximately 236 feet (72 meters) from the anchored position.

The buoy and mooring are designed to withstand 10-year storm conditions without the anchor moving location or the mooring parting.



In addition to the meteorological buoy (pictured above), an aluminum seabed frame (pictured below) will be anchored to the seafloor (shown in pink in the representative drawing above) using a steel anchor incorporated into the seabed frame's structure. When anchored the seabed frame height is approximately 2 feet (0.6 meters) above the seafloor. It is not attached to the meteorological buoy but will be anchored in the vicinity of the buoy. Once deployed, this notice will be updated with specific location information. The seabed frame collects marine acoustic monitoring, current velocity, turbidity, and marine growth data.



Lease Area (OCS-A 0538)

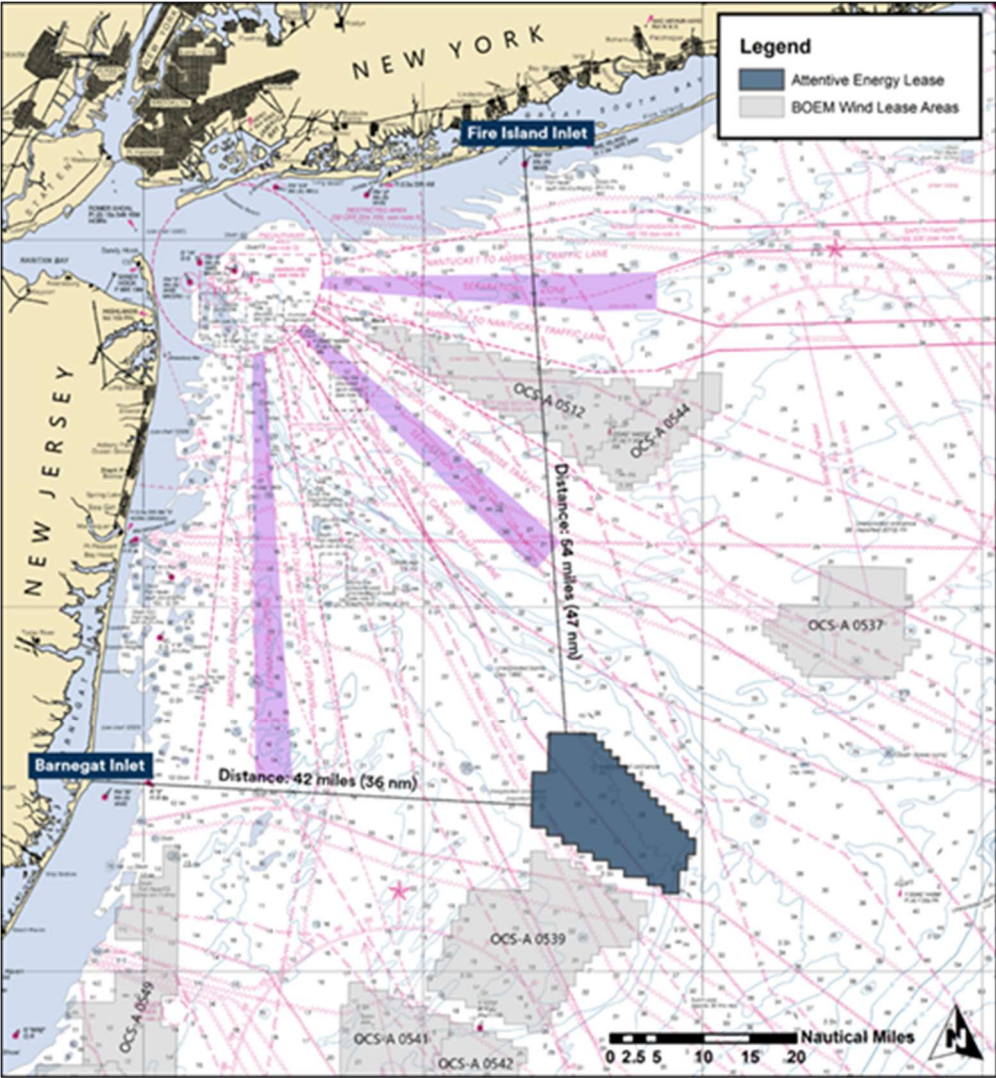
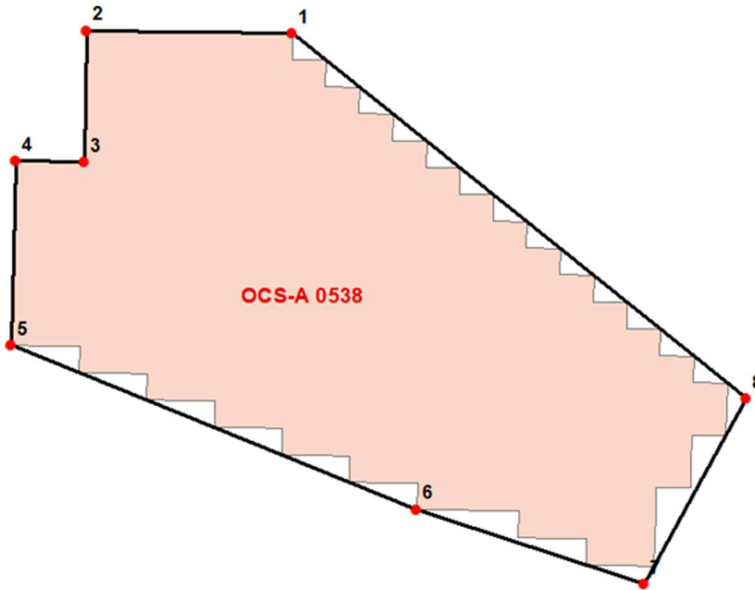


Chart not to be used for navigation.

Attentive Energy is developing an offshore wind energy project in BOEM Lease Area (OCS-A 0538) to meet the demand for renewable energy in New York and New Jersey.

The Attentive Energy Lease Area (OCS-A 0538) is 131.7 square miles, located 36 nautical miles east of Barnegat Inlet, NJ and 47 nautical miles south of Fire Island Inlet, NY. Attentive Energy has compiled a short list of coordinates

outlining the Lease Area to accommodate easy entry into GPS navigational plotters. Once plotted, the outline of the Lease Area can be used as a reference during fishing and transiting in and around the Lease Area. Please see the list of coordinates below in both DMS and DDM:



GPS Coordinates (DMS)

1. 39° 49' 33,289" N 073° 11' 28,101" W
2. 39° 49' 37,900" N 073° 16' 30,848" W
3. 39° 46' 23,370" N 073° 16' 35,707" W
4. 39° 46' 24,856" N 073° 18' 16,548" W
5. 39° 41' 52,506" N 073° 18' 23,219" W
6. 39° 37' 49,828" N 073° 08' 25,127" W
7. 39° 35' 59,640" N 073° 02' 49,773" W
8. 39° 40' 34,115" N 073° 00' 18,639" W

GPS Coordinates (DDM)

1. 39° 49.5548' N 073° 11.4684' W

2. 39° 49.6317' N 073° 16.5141' W
3. 39° 46.3895' N 073° 16.5951' W
4. 39° 46.4143' N 073° 18.2758' W
5. 39° 41.8751' N 073° 18.387' W
6. 39° 37.8305' N 073° 08' W
7. 39° 35.994' N 073° 02.8295' W
8. 39° 40.5686' N 073° 00.3106 W

Protected Species Precautions:

Attentive Energy is committed to ensuring the protection of marine mammals and other marine life. Aboard the RV Miss Emma McCall, Passive Acoustic Monitoring (PAM) operators are constantly monitoring for the presence of marine mammals. The RV Miss Emma McCall and the Marcelle Bordelon are also staffed through the entirety of survey operations by trained, professional Protected Species Observers (PSO). PSOs are approved through NOAA Fisheries and constantly monitor for the presence of species protected under the Endangered Species Act and Marine Mammal Protection Act. Attentive Energy takes these sightings seriously and will not begin geophysical or geotechnical operations if marine mammals are sighted within the distances stipulated in federal permits. If during geophysical survey operations, a marine mammal sighting occurs within these respective distances, shut down and restart procedures are implemented.

Survey Objectives:

The intent of the geophysical survey is to acquire multibeam echosounder, side scan sonar, gradiometer, parametric sub-bottom profiler and high-resolution 2D seismic data to fully characterize the seafloor and the shallow subsurface. Geotechnical surveys acquire soil samples and ground conditions to inform future design parameters for the project site and to fulfill the applicable regulatory requirements stipulated by the Bureau of Ocean Energy Management (BOEM) and National Oceanic and Atmospheric Administration Fisheries (NOAA Fisheries). The soil and ground information will be used to develop ground models and design the technical parameters/build of our offshore wind project.

We Want Your Feedback:

Attentive Energy is working closely with Fisheries Representatives, both commercial and recreational, as well as the wider fishing and mariner communities to gain feedback on fishing practices and navigation through and around the Lease Area. Attentive Energy invites you to complete the Fishing & Mariner Community Survey at:

<https://attentiveenergy.com/fishermen/>

Feedback can also be given directly to Attentive Energy's Fisheries Liaison and Marine Affairs Manager.

Get the latest updates on our website at:

<https://attentiveenergy.com/fishermen/>

Attentive Energy welcomes your feedback, please contact our team:

Fisheries Liaison

Sebastian Velez

sebastian.velez@totalenergies.com

+1 908-902-2686

Marine Affairs Manager

Brian LeFebvre

Brian.lefebvre@totalenergies.com

+1 202-997-8074