

Marine Activity Update

Current as of February 2024

Attentive Energy is performing marine operations in areas that may coincide with fishing activities. This marine activity update includes details about on-going survey and weather monitoring operations in BOEM Lease Area OCS-A 0538, along prospective export cable routes. These operations are active.

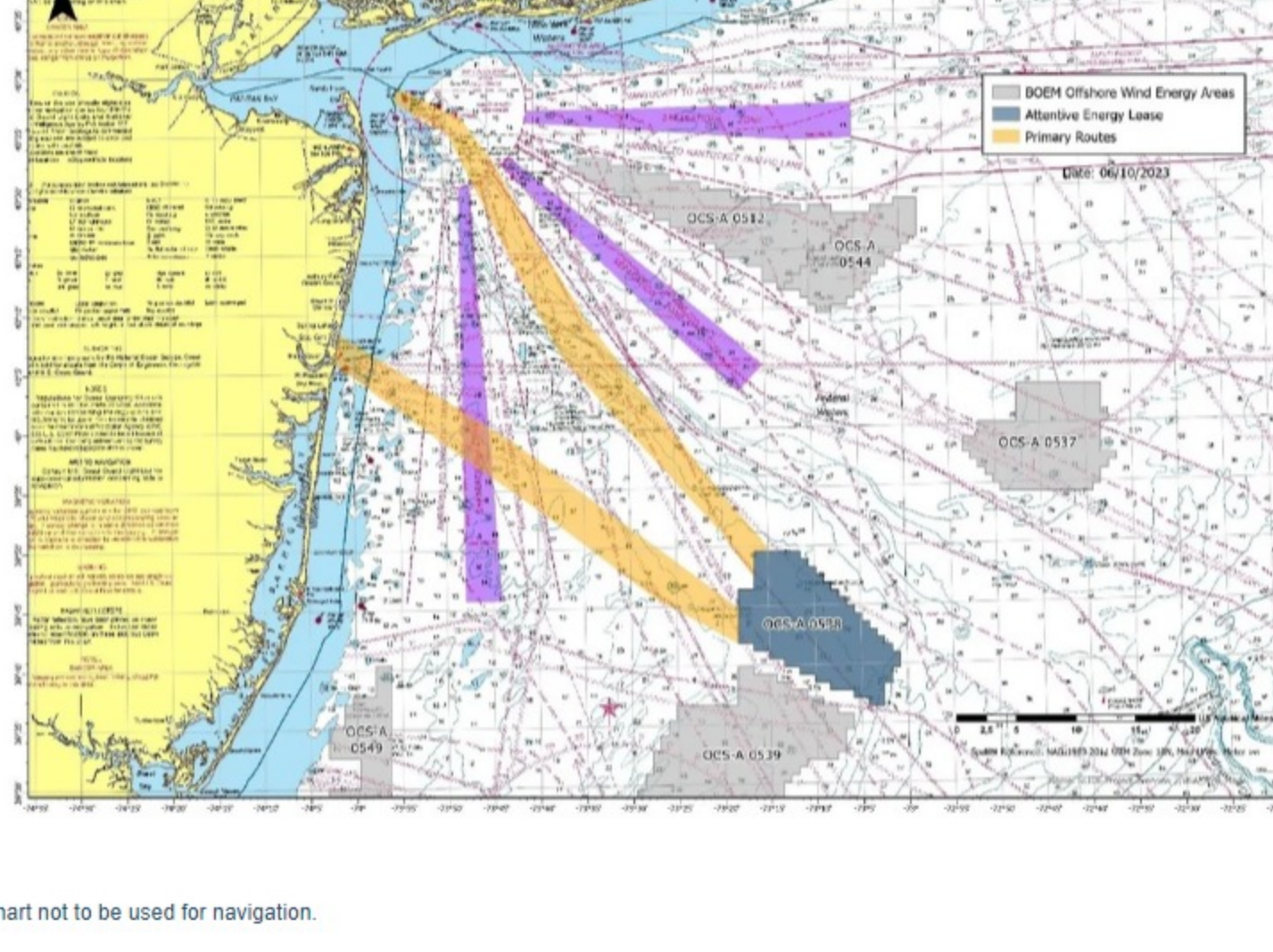


Chart not to be used for navigation.

Schedule

The RV Brooks McCall will continue geophysical survey operations along potential export cable routes between the Lease Area, New York, and New Jersey through February 2024. The fishing vessel Annice Marie will support these operations as a fishing gear scout vessel.

Vessels Involved:

RV Brooks McCall

Call Sign: WCZ7811



Fisheries Liaison: Scott Garvey

The RV Brooks McCall is a 159-foot (48.5m) vessel with a top speed of 11 knots. It will be conducting survey work in and around the Attentive Energy Lease area from starting February 2024.

The RV Brooks McCall can be reached via VHF-FM radio using normal hailing frequencies. A Fisheries Liaison will be aboard the vessel during survey operations to answer any fishing related questions and/or to coordinate with fishing vessels in the area.

FV Annice Marie

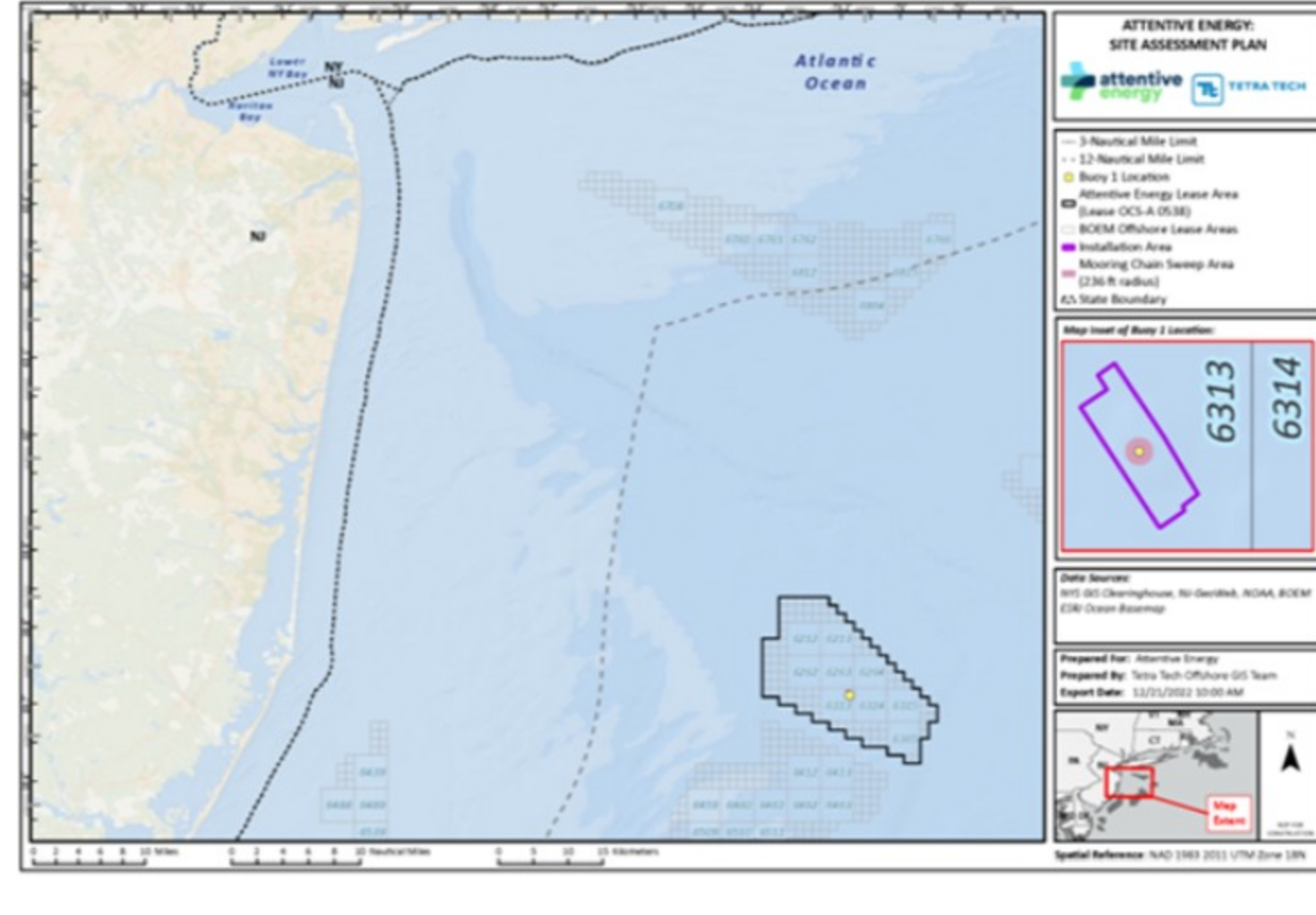


The FV Annice Marie

The FV Annice Marie is a 49.3-foot (15.03m) vessel operating in coordination with survey vessels to identify fixed fishing gear locations. The FV Annice Marie can be reached via VHF-FM radio using channel 16.

Weather Buoy and Seabed Frame Deployment

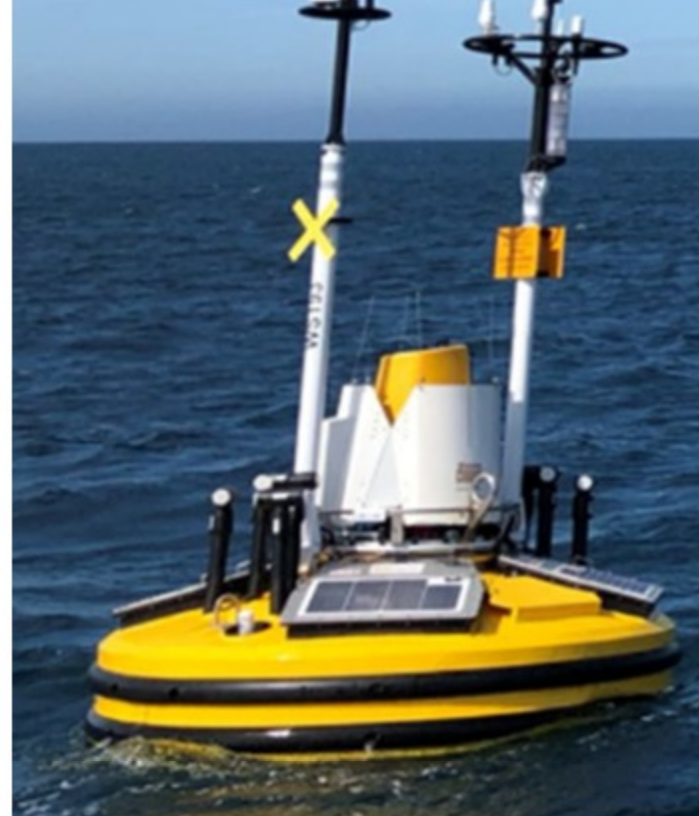
A meteorological buoy has been deployed in position 39° 41.876' N 73° 09.584' W, located 47 nautical miles east of Surf City, New Jersey. Deployment occurred the second week of January 2024. The buoy was deployed from the MV Go Adventurer (Radio Call Sign: WDM7780). MV Go Adventurer will monitor VHF-radio channel 16 throughout operations.



The buoy is a Fugro Seawatch Wind LIDAR Buoy (SWLB092). The buoy is colored yellow, 10 feet (3 meters) in diameter, and lit from sunset to sunrise with a quick flashing yellow light (4 nautical mile range). The light flashes yellow for 5 one second flashes every 20 seconds. The buoy will transmit an AIS signal as Type: ATON/Physical, Name: SWLB092 with MMSI No. 993663043. The buoy extends 16 feet (5 meters) above and 10 feet (3 meters) below the waterline. The buoy is anchored to the seabed with a 6,000-pound (3 ton) seabed anchor. The swing radius is approximately 236 feet (72 meters) from the anchored position. The buoy and mooring are designed to withstand 10-year storm conditions without the anchor moving location or the mooring parting.



In addition to the meteorological buoy, an aluminum seabed frame was anchored to the seafloor using a steel anchor incorporated into the seabed frame's structure located at 39° 41.766' N 73° 09.586' W. When anchored the seabed frame height is approximately 2 feet (0.6 meters) above the seafloor. It is not attached to the meteorological buoy but is anchored in the vicinity of the buoy. The seabed frame collects marine acoustic monitoring, current velocity, turbidity, and marine growth data.



Lease Area (OCS-A 0538)

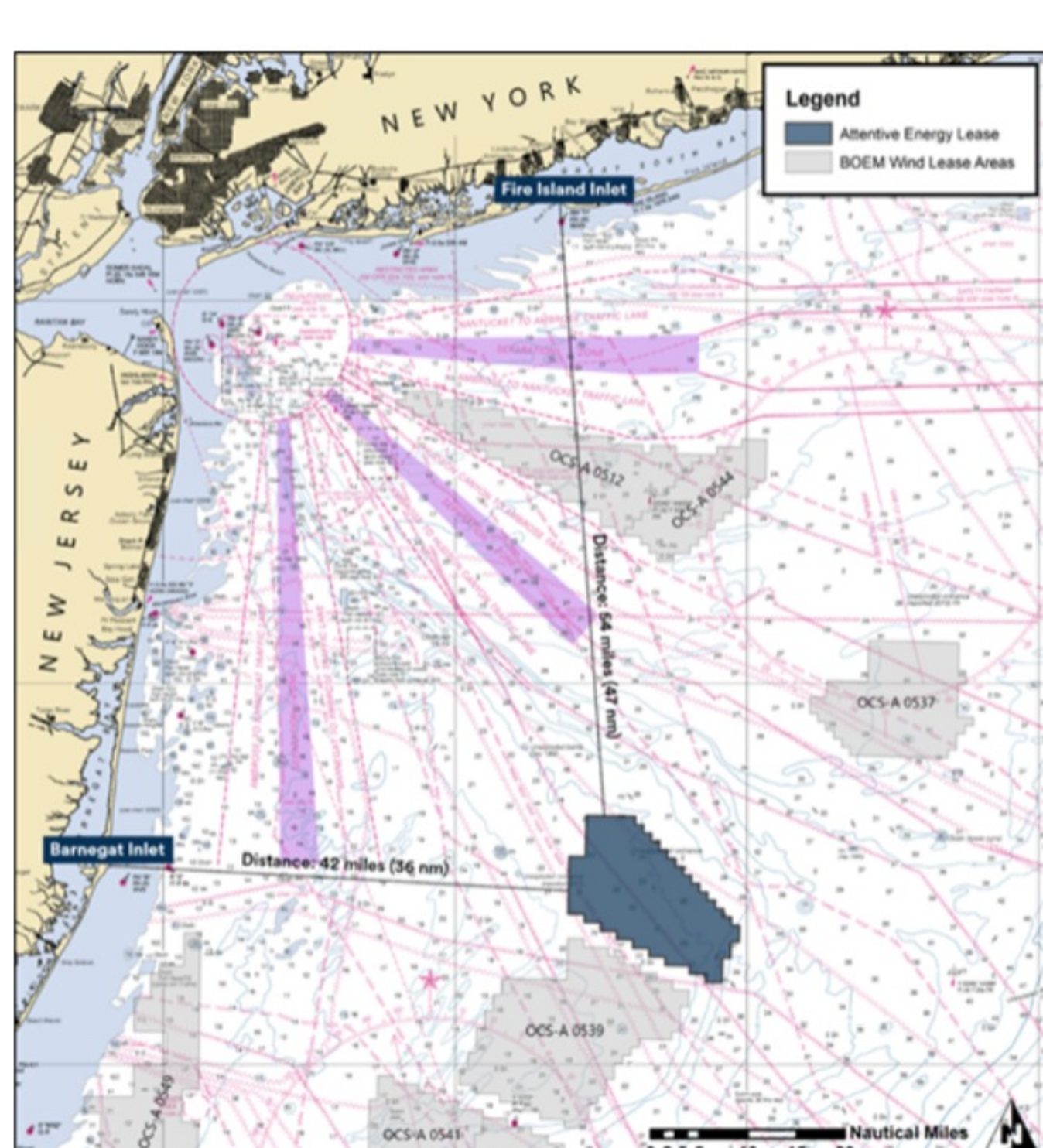
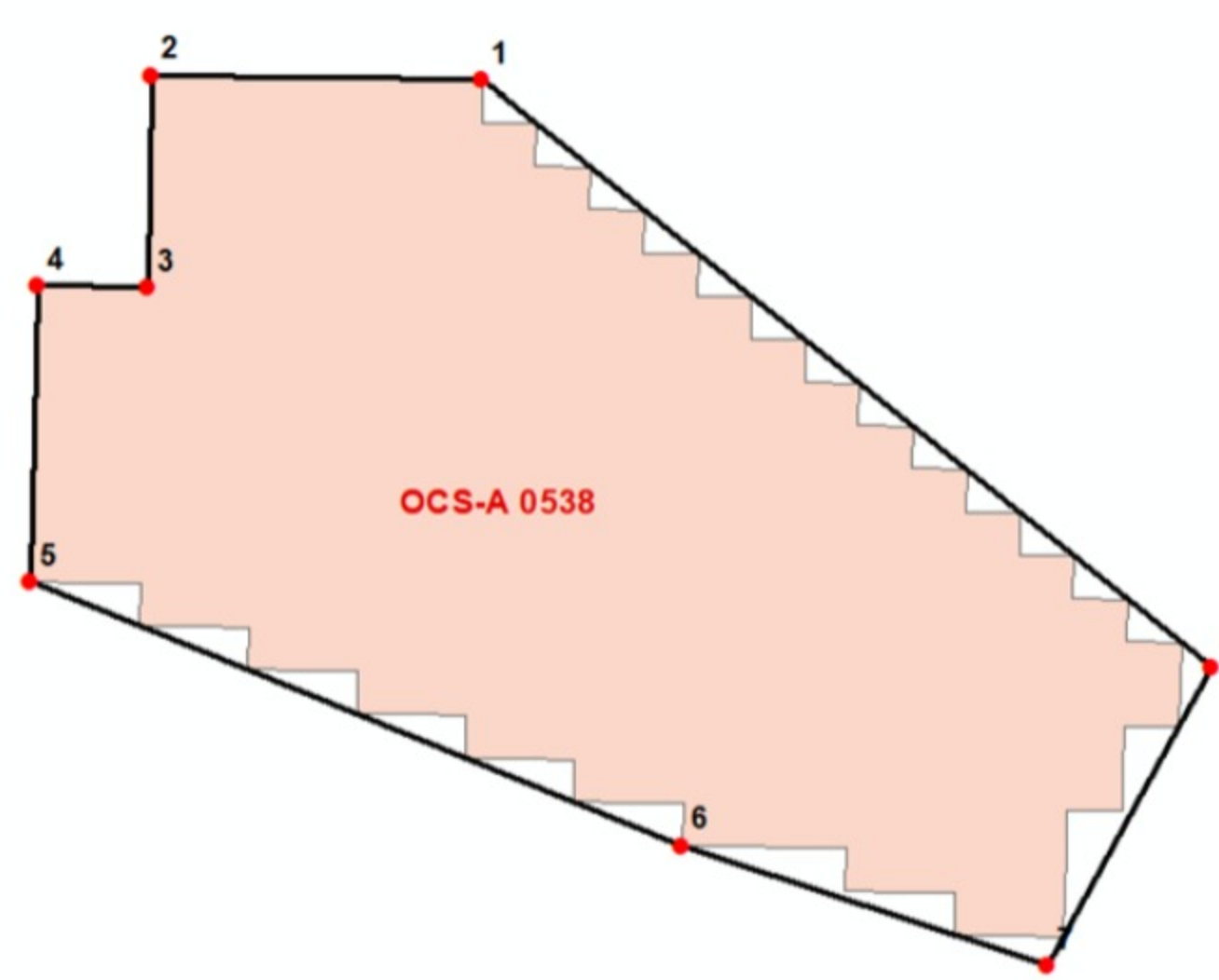


Chart not to be used for navigation.

Attentive Energy is developing an offshore wind energy project in BOEM Lease Area (OCS-A 0538) to meet the demand for renewable energy in New York and New Jersey.

The Attentive Energy Lease Area (OCS-A 0538) is 131.7 square miles, located 36 nautical miles east of Barnegat Inlet, NJ and 47 nautical miles south of Fire Island Inlet, NY. Attentive Energy has compiled a short list of coordinates outlining the Lease Area to accommodate easy entry into GPS navigational plotters. Once plotted, the outline of the Lease Area can be used as a reference during fishing and transiting in and around the Lease Area. Please see the list of coordinates below in both DMS and DDM:



	GPS Coordinates (DMS)	GPS Coordinates (DDM)
1.	39° 49' 33,289" N 073° 11' 28,101" W	39° 49.5548° N 073° 11.4684° W
2.	39° 49' 37,900" N 073° 16' 30,848" W	39° 49.6317° N 073° 16.5141° W
3.	39° 46' 23,370" N 073° 16' 35,707" W	39° 46.3895° N 073° 16.5951° W
4.	39° 46' 24,856" N 073° 18' 16,548" W	39° 46.4143° N 073° 18.2758° W
5.	39° 41' 52,506" N 073° 18' 23,219" W	39° 41.8751° N 073° 18.387° W
6.	39° 37' 49,828" N 073° 08' 25,127" W	39° 37.8305° N 073° 08' W
7.	39° 35' 59,640" N 073° 02' 49,773" W	39° 35.994° N 073° 02.8295° W
8.	39° 40' 34,115" N 073° 00' 18,639" W	39° 40.5686° N 073° 00.3106° W

Protected Species Precautions

Attentive Energy is committed to ensuring the protection of marine mammals and other marine life. Aboard the RV Miss Emma McCall, Passive Acoustic Monitoring (PAM) operators are constantly monitoring for the presence of marine mammals. The RV Miss Emma McCall and the Marcelle Bordelon are also staffed throughout the entirety of survey operations by trained, professional Protected Species Observers (PSO). PSOs are approved through NOAA Fisheries and constantly monitor for the presence of species protected under the Endangered Species Act and Marine Mammal Protection Act. Attentive Energy takes these sightings seriously and will not begin geophysical or geotechnical operations if marine mammals are sighted within the distances stipulated in federal permits. If during geophysical survey operations, a marine mammal sighting occurs within these respective distances, shut down and restart procedures are implemented.

Survey Objectives

The intent of the geophysical survey is to acquire multibeam echosounder, side scan sonar, gradiometer, parametric sub-bottom profiler and high-resolution 2D seismic data to fully characterize the seafloor and the shallow subsurface. Geotechnical surveys acquire soil samples and ground conditions to inform future design parameters for the project site and to fulfill the applicable regulatory requirements stipulated by the Bureau of Ocean Energy Management (BOEM) and National Oceanic and Atmospheric Administration Fisheries (NOAA Fisheries). The soil and ground information will be used to develop ground models and design the technical parameters/build of our offshore wind project.

We Want Your Feedback

Attentive Energy is working closely with Fisheries Representatives, both commercial and recreational, as well as the wider fishing and mariner communities to gain feedback on fishing practices and navigation through and around the Lease Area. Attentive Energy invites you to complete the Fishing & Mariner Community Survey at: <https://attentiveenergy.com/fishermen/>

Feedback can also be given directly to Attentive Energy's Fisheries Liaison and Marine Affairs Manager.

Get the latest updates on our website at: <https://attentiveenergy.com/fishermen/>

Attentive Energy welcomes your feedback, please contact our team:

Fisheries Liaison
 Sebastian Velez
Sebastian.Velez@totalenergies.com
 +1 908-902-2686

Marine Affairs Manager
 Brian LeFebvre
Brian.Lefebvre@totalenergies.com
 +1 202-997-8074