

Marine Activity Update

August 19th, 2024

Weather Buoy Swap

Attentive Energy has contracted with the M/V Rana Miller to exchange a meteorological buoy and seabed frame currently deployed in BOEM lease area OCS-A 0538. The vessel is scheduled to sail between August 26th and September 6th, 2024 for a one-day deployment. Deployment operations are not expected to last longer than a day.

The final location of the deployed buoy is expected to be 39° 41.876' N, 073° 09.584' W, located approximately 47 nautical miles east of Surf City, New Jersey. An aluminum seabed frame will also be anchored to the seafloor in position 39° 41.766' N, 073° 09.586' W using a steel anchor incorporated into the frame's structure. The buoy and seabed frame are replacing a buoy and seabed frame deployed in the same locations by Attentive Energy in January 2024. Those devices will be returned to a shoreside location via the Rana Miller.



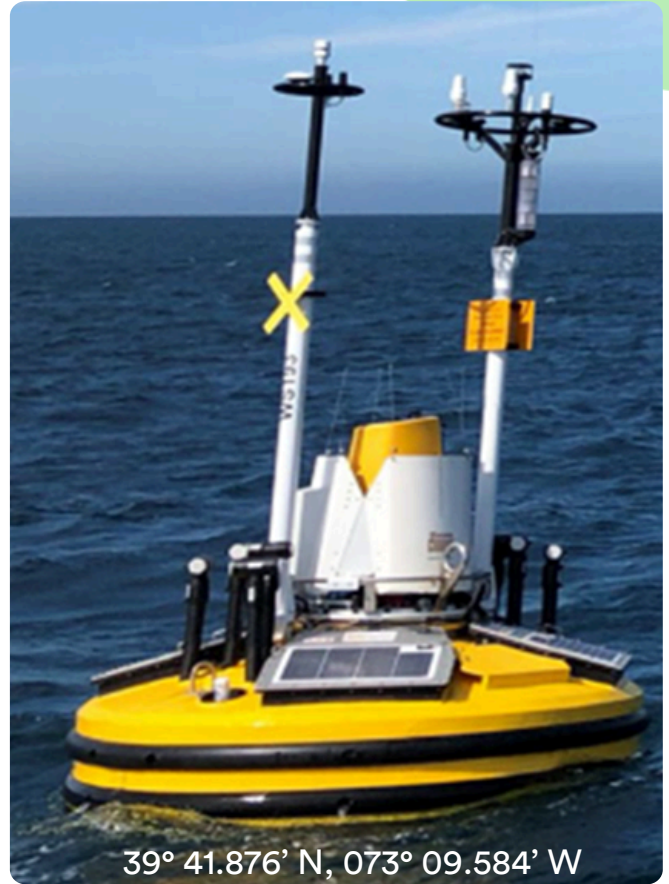
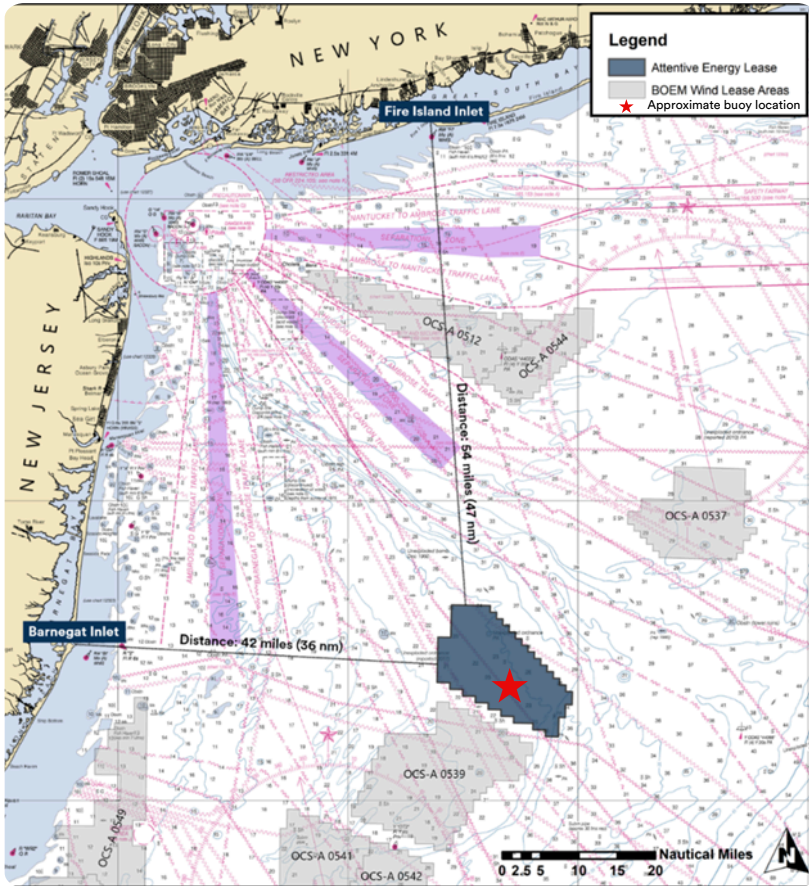
Rana Miller (pictured) is a US-flagged vessel that will operate from Millers Launch in Staten Island, NY to perform buoy recovery and deployment operations. The vessel has a black hull, white superstructure and is 44.4m (146ft) long and 11m (36ft) wide. The vessel will monitor VHF-FM channels 16 and 13 during operations.

The buoy and seabed frame are expected to remain in position through December 2024. Both devices are collecting meteorological data for offshore wind energy development.

The buoy is a Fugro Seawatch Wind LiDAR Buoy (SWLB092). The buoy is colored yellow, 10 feet (3 meters) in diameter, and lit from sunset to sunrise with a quick flashing yellow light (4 nautical mile range). The light flashes yellow for 5 one second flashes every 20 seconds. The buoy will transmit an AIS signal as Type: ATON/Physical, Name: SWLB092 with MMSI No. 993663043. The buoy extends 16 feet (5 meters) above and 10 feet (3 meters) below the waterline.



The buoy is anchored to the seabed with a 6,000-pound (3 ton) seabed anchor. The swing radius is approximately 236 feet (72 meters) from the anchored position. The buoy and mooring are designed to withstand 10-year storm conditions without the anchor moving location or the mooring parting.



The seabed frame height is approximately 2 feet (0.6 meters) above the seafloor. It is not attached to the meteorological buoy but is anchored in the buoy's vicinity.

The seabed frame collects marine acoustics, current velocity, turbidity, and marine growth data. Upon removal of the buoy and seabed frame, nothing will remain on the sea floor.



Wildlife Conservation Society Deploys Passive Acoustic Monitors

The Wildlife Conservation Society (WCS) has deployed 7 SoundTrap ST600 STD and HF acoustic recording devices across 6 offshore wind lease areas in the New York Bight (NYB) for the NYSERDA-funded Passive Acoustic Monitoring (PAM) project. These deployments are occurring independent of Attentive Energy operations. Each lease area will have one recorder, except for the Lease Area OCS-A 0539, which will have 2 recorders (see Fig. 1). Device locations, configurations, and points of contact at WCS can be found below.

Fig 1. Location of SoundTrap deployments within each lease area after comprehensive deconfliction with each developer

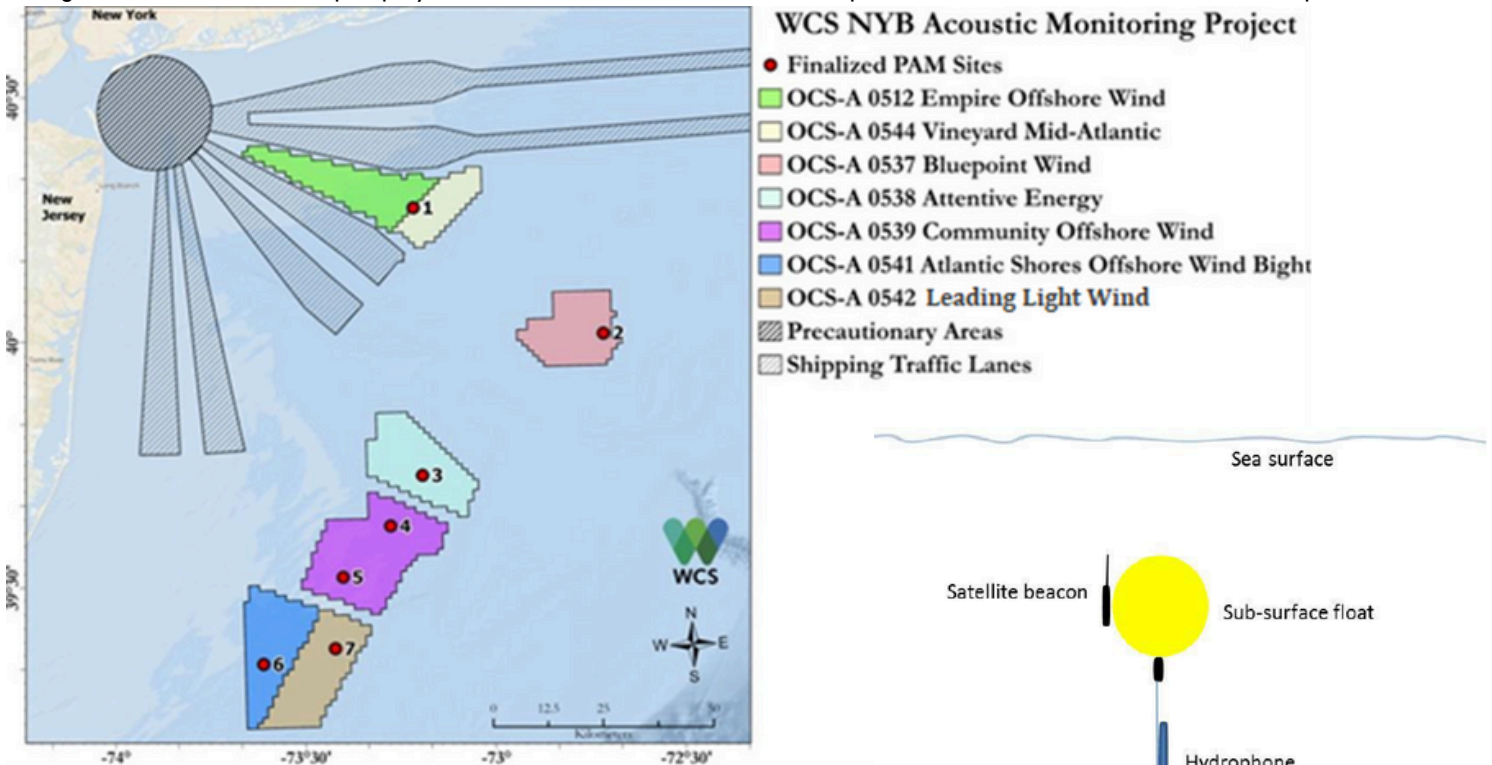


Fig. 2. The ARC (pictured below) 'leave no trace mooring design' will replace the acoustic release and bottom float in the figure below. SoundTrap deployment configuration. The ARC will replace the acoustic release and bottom float in this picture.

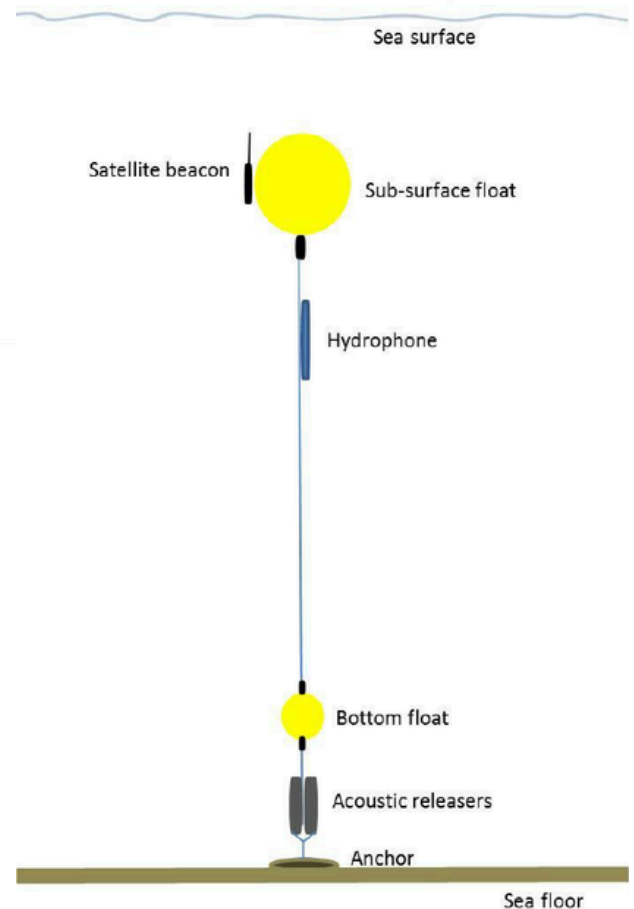




Table 1. Location of SoundTrap deployments within each lease area after comprehensive deconfliction with each developer. Site numbers listed in this table correspond to locations depicted in Figure 1. Attentive Energy is Site Number 3. These locations are tentative and are subject to change.

WCS NYSERDA PAM Locations					
Site No.	Lease Area and Company	Latitude (DD)	Longitude (DD)	Latitude (DMS)	Longitude (DMS)
1	OCS-A 0544 - Vineyard <u>Mid- Atlantic</u> LLC	40.2422	-73.1512	N 40° 14' 32.172"	W 73° 09' 04.277"
2	OCS-A 0537 - <u>Bluepoint</u> Wind, LLC	39.9675	-72.661	N 39° 58' 03.144"	W 72° 39' 39.636"
3	OCS-A 0538 - Attentive Energy LLC	39.6961	-73.1598	N 39° 41' 45.960"	W 73° 09' 35.161"
4	OCS-A 0539 - Community Offshore Wind, LLC	39.5952	-73.2499	N 39° 35' 42.960"	W 73° 14' 59.813"
5	OCS-A 0539 - Community Offshore Wind, LLC	39.4955	-73.3816	N 39° 29' 44.043"	W 73° 22' 53.795"
6	OCS-A 0541 - <u>Atlantic Shores</u> Offshore Wind <u>Bight</u> , LLC	39.3251	-73.6019	N 39° 19' 30.360"	W 73° 36' 06.840"
7	OCS-A 0542 – Leading Light Wind LLC	39.3505	-73.4108	N 39° 21' 01.844"	W 73° 24' 38.789"

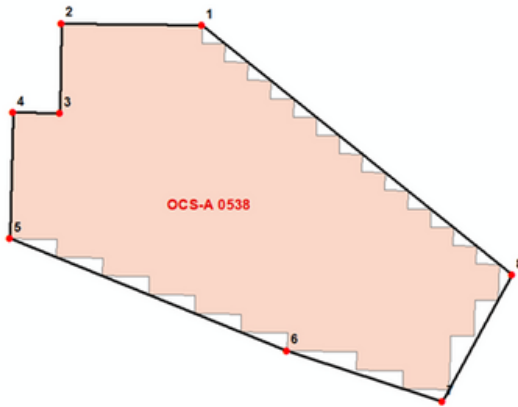
For questions about the WCS program or to report interactions with PAM devices please contact Melinda Rekdahl at the Wildlife Conservation Society.

Melinda Rekdahl
mrekdahl@wcs.org
 +1-347-281-0110



The Attentive Energy Lease Area (OCS-A 0538) is 131.7 square miles, located 36 nautical miles east of Barnegat Inlet, NJ and 47 nautical miles south of Fire Island Inlet, NY. Attentive Energy

has compiled a short list of coordinates outlining the Lease Area to accommodate easy entry into GPS navigational plotters. Once plotted, the outline of the Lease Area can be used as a reference during fishing and transiting in and around the Lease Area. Please see the list of coordinates below in both DMS and DDM:



	GPS Coordinates (DMS)	GPS Coordinates (DDM)
1.	39° 49' 33,289'' <u>N 073° 11' 28,101''</u> W	39° 49.5548' <u>N 073° 11.4684'</u> W
2.	39° 49' 37,900'' <u>N 073° 16' 30,848''</u> W	39° 49.6317' <u>N 073° 16.5141'</u> W
3.	39° 46' 23,370'' <u>N 073° 16' 35,707''</u> W	39° 46.3895' <u>N 073° 16.5951'</u> W
4.	39° 46' 24,856'' <u>N 073° 18' 16,548''</u> W	39° 46.4143' <u>N 073° 18.2758'</u> W
5.	39° 41' 52,506'' <u>N 073° 18' 23,219''</u> W	39° 41.8751' <u>N 073° 18.387'</u> W
6.	39° 37' 49,828'' <u>N 073° 08' 25,127''</u> W	39° 37.8305' <u>N 073° 08'</u> W
7.	39° 35' 59,640'' <u>N 073° 02' 49,773''</u> W	39° 35.994' <u>N 073° 02.8295'</u> W
8.	39° 40' 34,115'' <u>N 073° 00' 18,639''</u> W	39° 40.5686' <u>N 073° 00.3106'</u> W



We Want Your Feedback:

Attentive Energy is working closely with Fisheries Representatives, both commercial and recreational, as well as the wider fishing and mariner communities to gain feedback on fishing practices and navigation through and around the Lease Area. Attentive Energy invites you to complete the Fishing & Mariner Community Survey at:

[Fishing Community & Mariner Offshore Wind Survey | Cognito Forms](#)

Feedback can also be given directly to Attentive Energy's Fisheries Liaison and Marine Affairs Manager. Get the latest updates on our website at:

<https://attentiveenergy.com/fishermen/>

Attentive Energy welcomes your feedback, please contact our team:

Fisheries Liaison

Sebastian Velez

sebastian.velez@totalenergies.com

+1 908-902-2686

Marine Affairs Manager

Brian LeFebvre

brian.lefebvre@totalenergies.com

+1 202-997-8074